



Rabbit anti RCAS1 Polyclonal Antibody

Alternative Name(s): estrogen receptor binding site associated, antigen, 9; EBAG9; EB9

Order Information

- **Description:** RCAS1
- **Catalogue:** 602-610
- **Lot:** See label
- **Size:** 100ug/200ul
- **Host:** Rabbit
- **Clone:** nan
- **Application:** IHC(P), WB
- **Reactivity:** Hu, Ms, Rt

ANTIGEN PREPARATION

A synthetic peptide corresponding to the C-terminus of human RCAS1 protein, this sequence is identical to mouse, bovine, dog

BACKGROUND

The tumor associated antigen RCAS1, Receptor binding cancer antigen expressed on SiSo cells, or EBAG9, is a type II membrane protein, expressed on human cancer cells of uterus as well as digestive and respiratory tract. RCAS1 immunoreactivity can be detected in the membrane and cytoplasm of tumor cells. The expression of RCAS1 significantly correlated with the histological type of carcinoma and lymph node metastasis. The expression of RCAS1 is significantly correlated with poor prognosis in patients with T3 gastric carcinoma. RCAS1 protein may play an important role in the evasion of tumor cells from immunological defense mechanisms in human gastric carcinoma.

PURIFICATION

The Rabbit IgG is purified by Epitope Affinity Purification

FORMULATION

This affinity purified antibody is supplied in sterile Phosphatebuffered saline (pH7.2) containing antibody stabilizer

SPECIFICITY

This antibody recognizes ~32 kDa RCAS1 protein from human. The other species are not tested

STORAGE

The antibodies are stable for 24 months from date of receipt when stored at -20oC to -70oC. The antibodies can be stored at 2oC-8oC for three month without detectable loss of activity. Avoid repeated freezing-thawing cycles.

APPLICATIONS/SUGGESTED WORKING DILUTIONS*

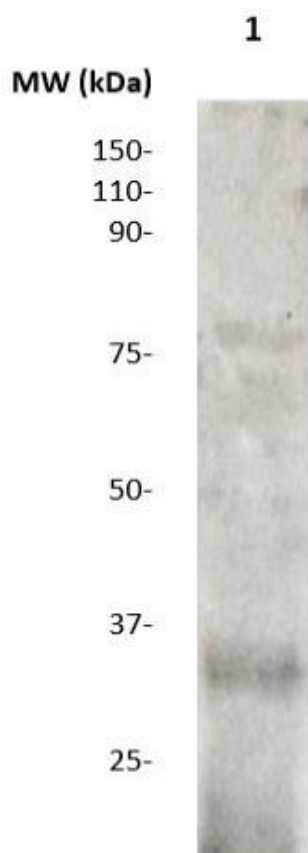
- Western Blot: 0.1-1 µg/ml
- ELISA: 0.01-0.1 µg/ml
- Immunoprecipitation: 2-5 µg/ml
- IHC: 2-10 µg/ml
- Flow cytometry: Not tested
- Molecular Weight: 32.0
- Positive Control: Kidney Tissue
- Cellular Location: Cell Membrane

*Optimal dilutions should be determined by researchers for the specific applications.

FOR RESEARCH USE ONLY.

AbboMax, Inc 2528 Qume Drive, Suite 8, San Jose, California 95131, USA
1 408-573-1898 (Tel). 1 408-573-1858 (Fax). www.abbomax.com info@abbomax.com

DATA ATTACHMENTS



Western Blot: The whole lysate derived from Hela (20 ug/lane) immunoblotted by Rabbit anti – RACA1 (Cat# 602-610) at 1:500. Observed a major immunoreactive band at molecular weight ~32 kDa.

REFERENCES

FOR RESEARCH USE ONLY.

AbboMax, Inc 2528 Qume Drive, Suite 8, San Jose, California 95131, USA
1 408-573-1898 (Tel). 1 408-573-1858 (Fax). www.abbomax.com info@abbomax.com