



Rabbit anti LRRK2 Polyclonal Antibody

Alternative Name(s): leucine-rich repeat kinase 2

Order Information

- **Description:** LRRK2
- **Catalogue:** 602-570
- **Lot:** See label
- **Size:** 100ug/200ul
- **Host:** Rabbit
- **Clone:** LLY-4
- **Application:** IHC(P), WB
- **Reactivity:** HU

ANTIGEN PREPARATION

A synthetic peptide corresponding to C-terminus of human LRRK2.

BACKGROUND

The leucine-rich repeat kinase family (LRKK) proteins are consists of an ankryin repeat region, a leucine-rich repeat (LRR) domain, a kinase domain, a DFG-like motif, a RAS domain, a GTPase domain, a MLK-like domain, and a WD40. Various genes and loci (α -synuclein/PARK1 and 4, parkin/PARK2, UCH-L1/PARK5, PINK1/PARK6, DJ-1/PARK7, LRRK2/PARK8, synphilin-1 and NR4A2) are associated to Parkinson's Disease (PD). LRRK2 may play an important role as a therapeutic target for treatment of PD (5).

PURIFICATION

The Rabbit IgG is purified by Epitope Affinity Purification

FORMULATION

This affinity purified antibody is supplied in sterile Phosphatebuffered saline (pH7.2) containing antibody stabilizer

SPECIFICITY

This antibody recognizes ~285 kDa of human LRRK2 protein. The other species are not tested

STORAGE

The antibodies are stable for 24 months from date of receipt when stored at -20°C to -70°C . The antibodies can be stored at 2°C - 8°C for three month without detectable loss of activity. Avoid repeated freezing-thawing cycles.

APPLICATIONS/SUGGESTED WORKING DILUTIONS*

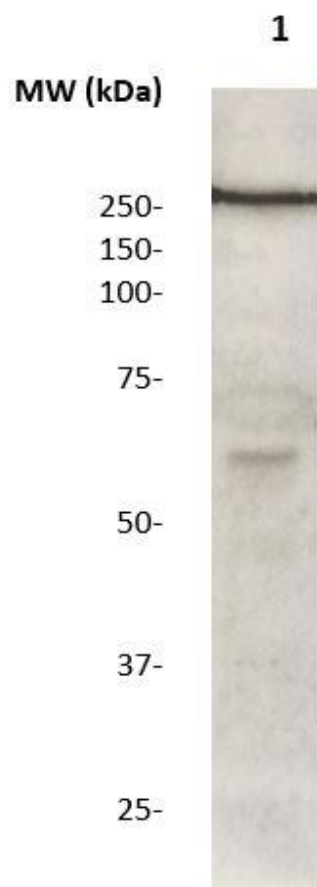
- Western Blot: 0.1-1 $\mu\text{g/ml}$
- ELISA: 0.01-0.1 $\mu\text{g/ml}$
- Immunoprecipitation: 2-5 $\mu\text{g/ml}$
- IHC: 2-10 $\mu\text{g/ml}$
- Flow cytometry: Not tested
- Molecular Weight: 250.0
- Positive Control: Kidney Tissue
- Cellular Location: Cell Membrane

*Optimal dilutions should be determined by researchers for the specific applications.

FOR RESEARCH USE ONLY.

AbboMax, Inc 2528 Qume Drive, Suite 8, San Jose, California 95131, USA
1 408-573-1898 (Tel). 1 408-573-1858 (Fax). www.abbomax.com info@abbomax.com

DATA ATTACHMENTS



Western Blot: The cell lysate derived from 3T3 was immunoprobed by Rabbit anti-LRRK2 (Cat#602-570) at 1:500. An immunoreactive band is observed around ~285 kDa

REFERENCES

FOR RESEARCH USE ONLY.