



Rabbit anti WDR19 Polyclonal Antibody

Alternative Name(s): WD repeat domain 19; ATD5; CED4; DYF-2; FAP66; ORF26; Oseg6; PWDMP; SRTD5; IFT144; NPHP13

Order Information

- **Description:** WDR19
- **Catalogue:** 602-550
- **Lot:** See label
- **Size:** 100ug/200ul
- **Host:** Rabbit
- **Clone:** nan
- **Application:** IHC(P), WB
- **Reactivity:** Hu, Ms, Rt

ANTIGEN PREPARATION

A synthetic peptide 880-920 amino acids of WDR19 protein

BACKGROUND

WDR19 is a member of the WD (tryptophan-aspartic acid) repeat family, which is a large family of structurally-related proteins known to participate in a wide range of cellular processes. Each WD repeat typically contains about 40 amino acids that are usually bracketed by gly-his and trp-aspartic acid (GH-WD), which may facilitate formation of heterotrimeric or multiprotein complexes. WDR19 contains six WD repeats, three transmembrane domains, and a clathrin heavy-chain repeat. Mutations in this gene have been described in individuals with a wide range of disorders affecting function of the cilium. These disorders are known as ciliopathies, and include Jeune syndrome, Sensenbrenner syndromes, Senior-Loken syndrome, combined or isolated nephronophthisis (NPHP), and retinitis pigmentosa (RP).

PURIFICATION

The Rabbit IgG is purified by Epitope Affinity Purification

FORMULATION

This affinity purified antibody is supplied in sterile Phosphatebuffered saline (pH7.2) containing antibody stabilizer

SPECIFICITY

This antibody recognizes human WDR19 protein. It cross reacts with human, mice and rat

STORAGE

The antibodies are stable for 24 months from date of receipt when stored at -20°C to -70°C. The antibodies can be stored at 2°C-8°C for three months without detectable loss of activity. Avoid repeated freezing-thawing cycles.

APPLICATIONS/SUGGESTED WORKING DILUTIONS*

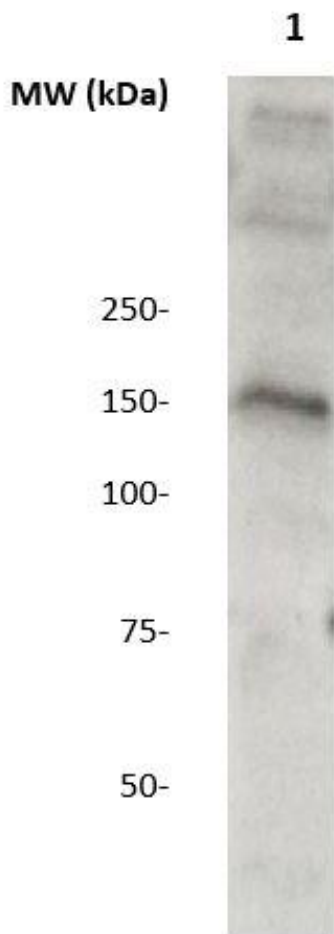
- Western Blot: 0.1-1 µg/ml
- ELISA: 0.01-0.1 µg/ml
- Immunoprecipitation: 2-5 µg/ml
- IHC: 2-10 µg/ml
- Flow cytometry: Not tested
- Molecular Weight: 152.0
- Positive Control: Kidney Tissue
- Cellular Location: Cell Membrane

*Optimal dilutions should be determined by researchers for the specific applications.

FOR RESEARCH USE ONLY.

AbboMax, Inc 2528 Qume Drive, Suite 8, San Jose, California 95131, USA
1 408-573-1898 (Tel). 1 408-573-1858 (Fax). www.abbomax.com info@abbomax.com

DATA ATTACHMENTS



Western Blot: The whole lysate derived from Hela (20 ug/lane) immunoblotted by Rabbit anti – EDR19 (Cat# 602-550) at 1:500. Observed a major immunoreactive band at molecular weight ~152kDa.

REFERENCES

FOR RESEARCH USE ONLY.

AbboMax, Inc 2528 Qume Drive, Suite 8, San Jose, California 95131, USA
1 408-573-1898 (Tel). 1 408-573-1858 (Fax). www.abbomax.com info@abbomax.com