



Rabbit anti Mammaglobin Polyclonal Antibody

Alternative Name(s): mammaglobin A; SCGB2A2,

Order Information

- **Description:** Mammaglobin
- **Catalogue:** 602-500
- **Lot:** See label
- **Size:** 100ug/200ul
- **Host:** Rabbit
- **Clone:** nan
- **Application:** IHC(P)
- **Reactivity:** Hu

ANTIGEN PREPARATION

A synthetic peptide FL NQT DET LSN VE corresponding to the inter-sequence of human mammaglobin protein.

BACKGROUND

Mammaglobin and lipophilin B, formed a covalent complex, belong to the secretoglobulin superfamily. Mammaglobin has been currently discovered as a promising diagnostic marker for breast cancer. The mammaglobin/lipophilin B complex determination may be used as a novel protein-based serological marker for breast cancer.

PURIFICATION

The Rabbit IgG is purified by Epitope Affinity Purification

FORMULATION

This affinity purified antibody is supplied in sterile Phosphatebuffered saline (pH7.2) containing antibody stabilizer

SPECIFICITY

This antibody only recognizes ~10 kDa of human mammaglobin. The other species are not tested.

STORAGE

The antibodies are stable for 24 months from date of receipt when stored at -20°C to -70°C. The antibodies can be stored at 2°C-8°C for three months without detectable loss of activity. Avoid repeated freezing-thawing cycles.

APPLICATIONS/SUGGESTED WORKING DILUTIONS*

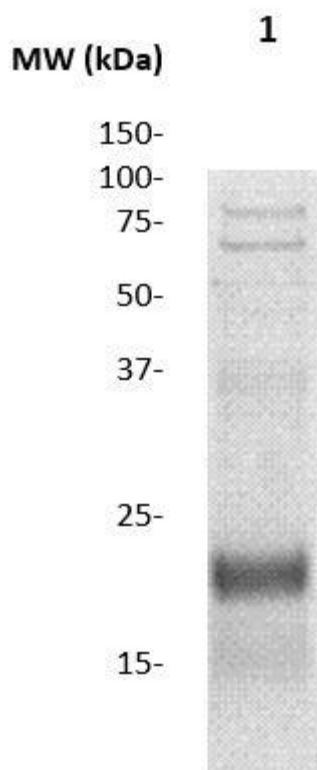
- Western Blot: 0.1-1 µg/ml
- ELISA: 0.01-0.1 µg/ml
- Immunoprecipitation: 2-5 µg/ml
- IHC: 2-10 µg/ml
- Flow cytometry: Not tested
- Molecular Weight: 10.0
- Positive Control: Kidney Tissue
- Cellular Location: Cell Membrane

*Optimal dilutions should be determined by researchers for the specific applications.

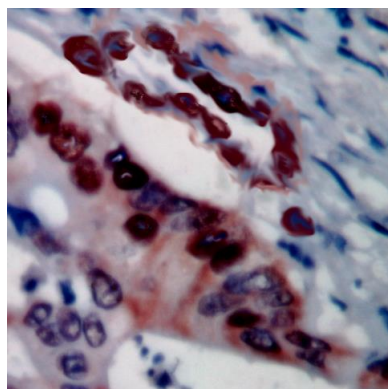
FOR RESEARCH USE ONLY.

AbboMax, Inc 2528 Qume Drive, Suite 8, San Jose, California 95131, USA
1 408-573-1898 (Tel). 1 408-573-1858 (Fax). www.abbomax.com info@abbomax.com

DATA ATTACHMENTS



Western Blot: The cell lysate derived from MCF-7 was immuno-blotted by Rabbit anti Mammoglobin antibody (Cat#602-500) at 1:500. Observed a major immunoreactive band at molecular weight ~15 kDa.



Immunohistochemistry: Human breast cancer tissue stained with Rabbit Anti-Mammoglobin antibody (Cat# 602-500) at 1:100 for 10 min @ RT. Staining of formalin-fixed tissue requires boiling tissue sections in 10 mM Citrate Buffer, pH 6.0 for 10 min followed by cooling at RT for 20 min.

REFERENCES

FOR RESEARCH USE ONLY.

AbboMax, Inc 2528 Qume Drive, Suite 8, San Jose, California 95131, USA
1 408-573-1898 (Tel). 1 408-573-1858 (Fax). www.abbomax.com info@abbomax.com