



Rabbit anti FOXP2 Polyclonal Antibody

Alternative Name(s): Forkhead box P2

Order Information

- **Description:** FOXP2
- **Catalogue:** 602-470
- **Lot:** See label
- **Size:** 100ug/200ul
- **Host:** Rabbit
- **Clone:** nan
- **Application:** IHC(P), WB
- **Reactivity:** Hu

ANTIGEN PREPARATION

A synthetic peptide corresponding to the internal region of human FOXP2 protein. This sequence is identical to human, mouse, rat and dog

BACKGROUND

Forkhead/winged-helix box (Fox) genes are the transcriptional regulators and highly conserved across mammals. It contains a FOX DNA-binding domain and large polyglutamine tract. The FOXP2s are involved in organogenesis and cell differentiation. FOXP2 gene encodes an evolutionarily conserved transcription factor expressed in fetal and adult brain. A mutation of FOXP2 was discovered in patients with severe defects in speech and language, such as speech disorder, autism.

PURIFICATION

The Rabbit IgG is purified by Epitope Affinity Purification

FORMULATION

This affinity purified antibody is supplied in sterile Phosphatebuffered saline (pH7.2) containing antibody stabilizer

SPECIFICITY

This antibody recognizes ~83 kDa of FOXP2 protein. It reacts to human, mouse and rat. The other species are not tested.

STORAGE

The antibodies are stable for 24 months from date of receipt when stored at -20oC to -70oC. The antibodies can be stored at 2oC-8oC for three month without detectable loss of activity. Avoid repeated freezing-thawing cycles.

APPLICATIONS/SUGGESTED WORKING DILUTIONS*

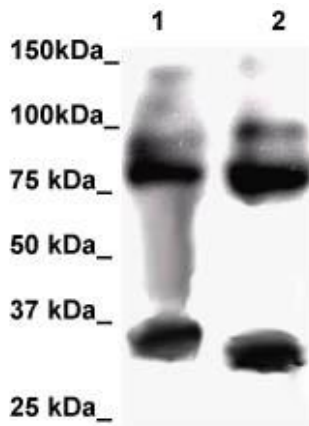
- Western Blot: 0.1-1 µg/ml
- ELISA: 0.01-0.1 µg/ml
- Immunoprecipitation: 2-5 µg/ml
- IHC: 2-10 µg/ml
- Flow cytometry: Not tested
- Molecular Weight: 70-80
- Positive Control: Kidney Tissue
- Cellular Location: Cell Membrane

*Optimal dilutions should be determined by researchers for the specific applications.

FOR RESEARCH USE ONLY.

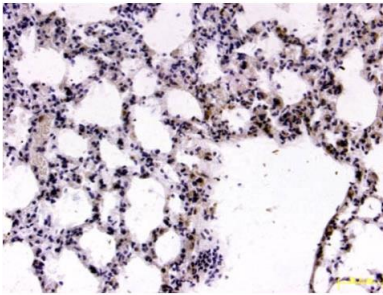
AbboMax, Inc 2528 Qume Drive, Suite 8, San Jose, California 95131, USA
1 408-573-1898 (Tel). 1 408-573-1858 (Fax). www.abbomax.com info@abbomax.com

DATA ATTACHMENTS



Western Blot: The whole lysate derived from mouse brain (Lane 1) and lung (Lane 2) (20 ug/lane) immunoblotted by Rabbit anti – FXP2 (Cat# 602-470) at 1:500. Observed a major immunoreactive band at molecular weight~83 kDa.

RbxFOXP2 Staining of Mouse Brain (lane1) and Lung (lane2) Lysate at 2.5 ug/ml, RT 1hr



Immunohistochemistry: Mouse Lung tissue (FFPE) stained with Rabbit anti-FOXP2 (Cat# 602-470) at 1:200 for 10 min @ RT. Staining of formalin-fixed tissue requires boiling tissue sections in 10 mM Citrate Buffer, pH 6.0 for 10 min followed by cooling at RT for 20 min.

Rb x FOXP2 staining formalin-fixed paraffin-embedded mouse lung tissue (10 ug/ml)

REFERENCES

FOR RESEARCH USE ONLY.