



Rabbit anti FOXP1 Polyclonal Antibody

Alternative Name(s): Forkhead box P1

Order Information

- **Description:** FOXP1
- **Catalogue:** 602-460
- **Lot:** See label
- **Size:** 100ug/200ul
- **Host:** Rabbit
- **Clone:** nan
- **Application:** IHC(P), WB
- **Reactivity:** Hu

ANTIGEN PREPARATION

A synthetic peptide corresponding to the C-terminus of human FOXP1 protein. This sequence is identical to human, mouse, rat, bovine and chicken

BACKGROUND

FOXP1 (a 431 amino acid protein) is a member of the forkhead/winged-helix family of transcriptional regulators and is highly conserved across mammals. FOXP3 is essential for normal immune homeostasis. FOXP3 is stably and constitutively expressed at a high level in CD25 + CD4 positive regulatory T cells, at low level in CD4 positive/CD25 negative cells, and is absent in CD4 negative/CD8 positive T cells. FOXP3 may be a master regulatory gene and a more specific marker of regulatory T cells than other T cells.

PURIFICATION

The Rabbit IgG is purified by Epitope Affinity Purification

FORMULATION

This affinity purified antibody is supplied in sterile Phosphatebuffered saline (pH7.2) containing antibody stabilizer

SPECIFICITY

This antibody only recognizes ~52 kDa of human FOXP1. The other species are not tested.

STORAGE

The antibodies are stable for 24 months from date of receipt when stored at -20oC to -70oC. The antibodies can be stored at 2oC-8oC for three month without detectable loss of activity. Avoid repeated freezing-thawing cycles.

APPLICATIONS/SUGGESTED WORKING DILUTIONS*

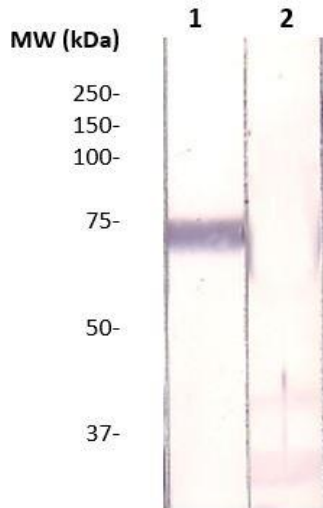
- Western Blot: 0.1-1 µg/ml
- ELISA: 0.01-0.1 µg/ml
- Immunoprecipitation: 2-5 µg/ml
- IHC: 2-10 µg/ml
- Flow cytometry: Not tested
- Molecular Weight: 55.0
- Positive Control: Kidney Tissue
- Cellular Location: Cell Membrane

*Optimal dilutions should be determined by researchers for the specific applications.

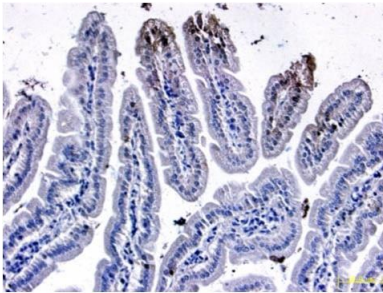
FOR RESEARCH USE ONLY.

AbboMax, Inc 2528 Qume Drive, Suite 8, San Jose, California 95131, USA
1 408-573-1898 (Tel). 1 408-573-1858 (Fax). www.abbomax.com info@abbomax.com

DATA ATTACHMENTS



Western Blot: The HeLa cell lysate was immuno-blotted by Rabbit anti FOXP1 antibody, (Cat#602-460) at 1:500 (Lane 1). Lane 2 was pre-incubated with immunizing peptide. Observed a major immunoreactive band at molecular weight ~52 kDa.



Immunohistochemistry: Mouse intestine (FFPE) stained with Rabbit anti-FOXP1 (Cat#602-460) at 1:200 for 10 min @ RT. Staining of formalin-fixed tissue requires boiling tissue sections in 10 mM Citrate Buffer, pH 6.0 for 10 min followed by cooling at RT for 20 min.

Rbx FOXP1 staining on Formalin-fixed paraffin-embedded mouse small intestine (10 ug/ml)

REFERENCES

FOR RESEARCH USE ONLY.