



Rabbit anti GADD153 Polyclonal Antibody

Alternative Name(s): Growth arrest and DNA damage-inducible protein GADD153; CHOP; CEBPZ; CHOP10; CHOP-10; GADD153; AtDDIT3; C/EBPzeta

Order Information

- **Description:** GADD153/DDIT3/CHOP
- **Catalogue:** 602-430
- **Lot:** See label
- **Size:** 100ug/200ul
- **Host:** Rabbit
- **Clone:** nan
- **Application:** IHC(P), WB
- **Reactivity:** Hu

ANTIGEN PREPARATION

A synthetic peptide of human ID3

BACKGROUND

GADD153 (Growth arrest and DNA damage-inducible protein GADD153), also called DDIT3 (DNA damage inducible transcript 3), is a transcription factor. has been described as a growth arrest and DNA damage-inducible gene that encodes a C/EBP-related nuclear protein. This protein has also been designated C/EBP-homologous protein (CHOP-10). GADD153 expression is induced by a variety of cellular stresses, inducing nutrient deprivation and metabolic perturbations. GADD153 is a dominant-negative inhibitor by forming heterodimers with other C/EBP members, such as C/EBP and LAP (liver activator protein), and preventing their DNA binding activity. Fusion of this gene with EWSR1 and FUS on chromosome 16 or EWSR1 on chromosome 22 induced by translocation generates chimeric proteins in myxoid liposarcomas or Ewing sarcoma.

PURIFICATION

The Rabbit IgG is purified by Epitope Affinity Purification

FORMULATION

This affinity purified antibody is supplied in sterile Phosphatebuffered saline (pH7.2) containing antibody stabilizer

SPECIFICITY

This antibody recognizes human GADD153/DDIT3/CHOP protein. The other species are not tested.

STORAGE

The antibodies are stable for 24 months from date of receipt when stored at -20oC to -70oC. The antibodies can be stored at 2oC-8oC for three month without detectable loss of activity. Avoid repeated freezing-thawing cycles.

APPLICATIONS/SUGGESTED WORKING DILUTIONS*

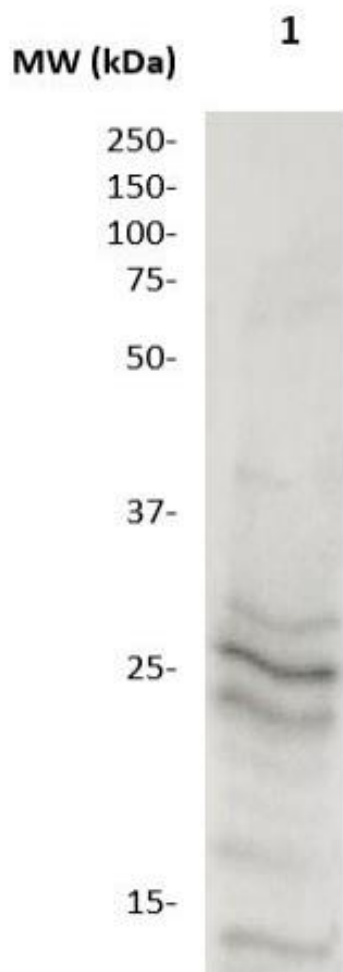
- Western Blot: 0.1-1 µg/ml
- ELISA: 0.01-0.1 µg/ml
- Immunoprecipitation: 2-5 µg/ml
- IHC: 2-10 µg/ml
- Flow cytometry: Not tested
- Molecular Weight: 27.0
- Positive Control: Kidney Tissue
- Cellular Location: Cell Membrane

*Optimal dilutions should be determined by researchers for the specific applications.

FOR RESEARCH USE ONLY.

AbboMax, Inc 2528 Qume Drive, Suite 8, San Jose, California 95131, USA
1 408-573-1898 (Tel). 1 408-573-1858 (Fax). www.abbomax.com info@abbomax.com

DATA ATTACHMENTS



Western Blot: The whole lysate derived from Hela (20 ug/lane) immunoblotted by Rabbit anti –GADD153 (Cat# 602-430) at 1:500. Observed a major immunoreactive band at molecular weight ~27kDa.

REFERENCES

FOR RESEARCH USE ONLY.

AbboMax, Inc 2528 Qume Drive, Suite 8, San Jose, California 95131, USA
1 408-573-1898 (Tel). 1 408-573-1858 (Fax). www.abbomax.com info@abbomax.com