



## Rabbit anti MCM5 Polyclonal Antibody

**Alternative Name(s):** Minichromosome maintenance complex component 5; CDC46; MGORS8; P1-CDC46

### Order Information

- **Description:** MCM5
- **Catalogue:** 602-400
- **Lot:** See label
- **Size:** 100ug/200ul
- **Host:** Rabbit
- **Clone:** nan
- **Application:** IHC(P), WB
- **Reactivity:** Hu

### **ANTIGEN PREPARATION**

A synthetic peptide of human MCM5

### **BACKGROUND**

MCM5 belongs to the mini-chromosome maintenance (MCM) family of proteins. It includes MCM2, MCM3, MCM4 (Cdc21), MCM5 (Cdc46), MCM6 (Mis5) and MCM7 (Cdc47). MCM5 is involved in the initiation of DNA replication. It is upregulated in the transition from the G0 to G1/S phase of the cell cycle and may actively participate in cell cycle regulation. MCM5 is involved in IFN- $\gamma$ -induced Stat1 $\alpha$  transcription activation.

### **PURIFICATION**

The Rabbit IgG is purified by Epitope Affinity Purification

### **FORMULATION**

This affinity purified antibody is supplied in sterile Phosphatebuffered saline (pH7.2) containing antibody stabilizer

### **SPECIFICITY**

This antibody recognizes human MCM5 protein. The other species are not tested.

### **STORAGE**

The antibodies are stable for 24 months from date of receipt when stored at  $-20^{\circ}\text{C}$  to  $-70^{\circ}\text{C}$ . The antibodies can be stored at  $2^{\circ}\text{C}$ - $8^{\circ}\text{C}$  for three month without detectable loss of activity. Avoid repeated freezing-thawing cycles.

### **APPLICATIONS/SUGGESTED WORKING DILUTIONS\***

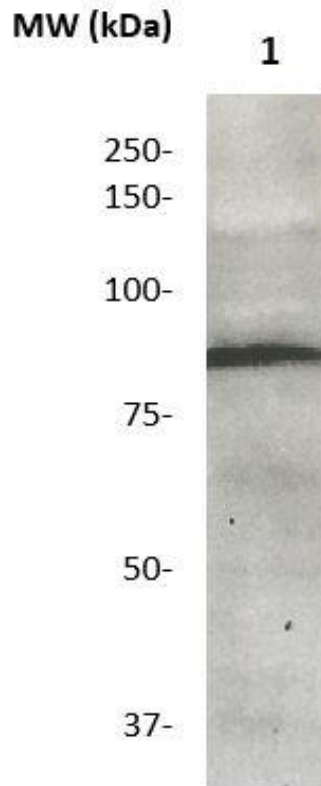
- Western Blot: 0.1-1  $\mu\text{g/ml}$
- ELISA: 0.01-0.1  $\mu\text{g/ml}$
- Immunoprecipitation: 2-5  $\mu\text{g/ml}$
- IHC: 2-10  $\mu\text{g/ml}$
- Flow cytometry: Not tested
- Molecular Weight: 82.0
- Positive Control: Kidney Tissue
- Cellular Location: Cell Membrane

\*Optimal dilutions should be determined by researchers for the specific applications.

### **FOR RESEARCH USE ONLY.**

AbboMax, Inc 2528 Qume Drive, Suite 8, San Jose, California 95131, USA  
1 408-573-1898 (Tel). 1 408-573-1858 (Fax). [www.abbomax.com](http://www.abbomax.com) [info@abbomax.com](mailto:info@abbomax.com)

**DATA ATTACHMENTS**



Western Blot: The whole lysate derived from HeLa (20 ug/lane) immunoblotted by Rabbit anti -MCM5 (Cat# 602-400) at 1:500. Observed a major immunoreactive band at molecular weight ~82kDa.

**REFERENCES**

**FOR RESEARCH USE ONLY.**