



Rabbit anti CSF-1R Polyclonal Antibody

Alternative Name(s): Colony stimulating factor 1 receptor; CD115

Order Information

- **Description:** CSF-1R
- **Catalogue:** 602-130
- **Lot:** See label
- **Size:** 100ug/200ul
- **Host:** Rabbit
- **Clone:** nan
- **Application:** IHC(P), WB
- **Reactivity:** Hu, Ms, Rt

ANTIGEN PREPARATION

A synthetic peptide corresponding to the C-terminus of human CSF-1R protein. This sequence is identical within human, mouse, rat, and bovine.

BACKGROUND

CD115, or Colony-stimulating factor-1 receptor (CSF-1R), is the major regulator of macrophage development and associated with epithelial cancers of the breast and ovary. CSF-1R is a disulfide-linked homodimer, which upon binding of its ligand, CSF-1, undergoes tyrosine autophosphorylation and subsequently, phosphorylates other membrane-proximal downstream targets which results in cytoskeletal remodeling, gene transcription and protein translation. The activated or phosphorylated form of CSF-1R has been associated with enhanced invasive and metastatic potential. The phosphorylation residues include Tyr 708, Tyr 723, Tyr 809 which correlate CSF-1R expression with changes in the growth and development of the cancer stage.

PURIFICATION

The Rabbit IgG is purified by Epitope Affinity Purification

FORMULATION

This affinity purified antibody is supplied in sterile Phosphatebuffered saline (pH7.2) containing antibody stabilizer

SPECIFICITY

This antibody recognizes of human CSF-1R protein. This antibody also reacts with mouse, rat. The other species are not tested.

STORAGE

The antibodies are stable for 24 months from date of receipt when stored at -20°C to -70°C . The antibodies can be stored at 2°C - 8°C for three month without detectable loss of activity. Avoid repeated freezing-thawing cycles.

APPLICATIONS/SUGGESTED WORKING DILUTIONS*

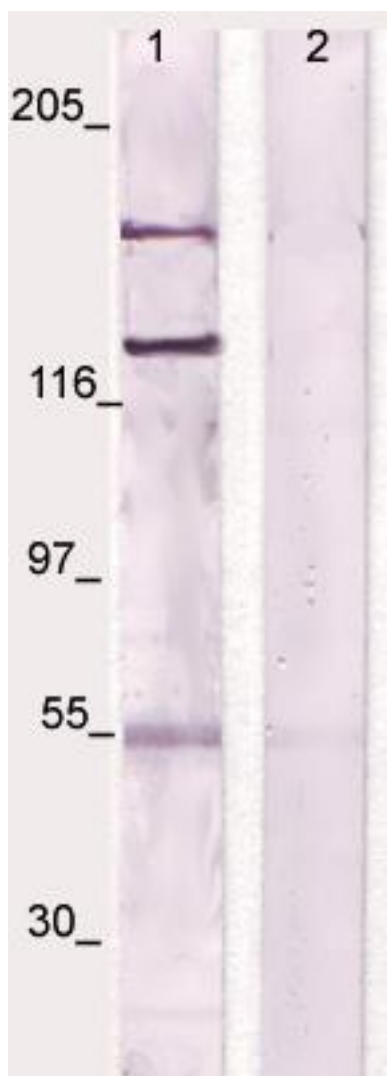
- Western Blot: 0.1-1 $\mu\text{g/ml}$
- ELISA: 0.01-0.1 $\mu\text{g/ml}$
- Immunoprecipitation: 2-5 $\mu\text{g/ml}$
- IHC: 2-10 $\mu\text{g/ml}$
- Flow cytometry: Not tested
- Molecular Weight: 107.0
- Positive Control: Kidney Tissue
- Cellular Location: Cell Membrane

*Optimal dilutions should be determined by researchers for the specific applications.

FOR RESEARCH USE ONLY.

AbboMax, Inc 2528 Qume Drive, Suite 8, San Jose, California 95131, USA
1 408-573-1898 (Tel). 1 408-573-1858 (Fax). www.abbomax.com info@abbomax.com

DATA ATTACHMENTS



Western Blot: The whole cell lysate derived from LNCaP was immunoblotted by Rabbit anti-CSF-1R (Cat#602-130) at 1:500. A major immunoreactive band is observed around ~130kDa (lane 1). This band is blocked by pre-incubation of immunizing peptide (lane 2).

REFERENCES

FOR RESEARCH USE ONLY.

AbboMax, Inc 2528 Qume Drive, Suite 8, San Jose, California 95131, USA
1 408-573-1898 (Tel). 1 408-573-1858 (Fax). www.abbomax.com info@abbomax.com