



Rabbit anti pTEN Polyclonal Antibody

Alternative Name(s): Phosphatase and tensin homolog; PTEN; MMAC1

Order Information

- **Description:** pTEN
- **Catalogue:** 601-850
- **Lot:** See label
- **Size:** 100ug/200ul
- **Host:** Rabbit
- **Clone:** nan
- **Application:** IHC(P), WB
- **Reactivity:** Hu

ANTIGEN PREPARATION

A synthetic peptide corresponding to inter-segment of human pTEN protein.

BACKGROUND

The phosphatase and tensin homologue (PTEN) tumor suppressor is a phosphatidylinositol D3-phosphatase that is frequently mutated in tumor cells. PTEN is itself regulated by phosphorylation on multiple serine and threonine residues in its C terminus. Casein kinase 2 (CK2) and Glycogen synthase kinase 3beta (GSK3beta), ATK/PI3K are involved in PTEN phosphorylation at sites of S370, S380, T382, T383, S385. The PTEN phosphorylation may play critical roles in the tumor suppressor functions.

PURIFICATION

The Rabbit IgG is purified by Epitope Affinity Purification

FORMULATION

This affinity purified antibody is supplied in sterile Phosphatebuffered saline (pH7.2) containing antibody stabilizer

SPECIFICITY

This antibody recognizes human PTEN protein. It also reacts to mouse and rat. The other species are not tested.

STORAGE

The antibodies are stable for 24 months from date of receipt when stored at -20oC to -70oC. The antibodies can be stored at 2oC-8oC for three month without detectable loss of activity. Avoid repeated freezing-thawing cycles.

APPLICATIONS/SUGGESTED WORKING DILUTIONS*

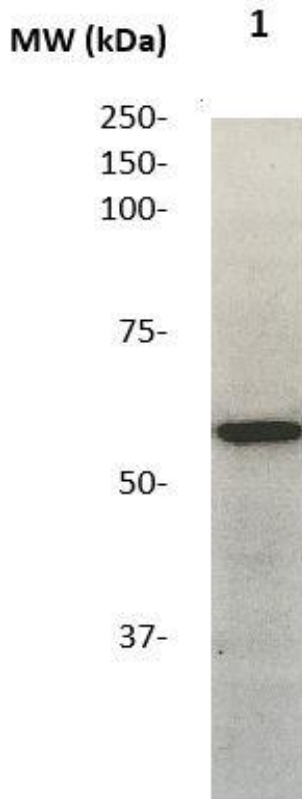
- Western Blot: 0.1-1 µg/ml
- ELISA: 0.01-0.1 µg/ml
- Immunoprecipitation: 2-5 µg/ml
- IHC: 2-10 µg/ml
- Flow cytometry: Not tested
- Molecular Weight: 58.0
- Positive Control: Kidney Tissue
- Cellular Location: Cell Membrane

*Optimal dilutions should be determined by researchers for the specific applications.

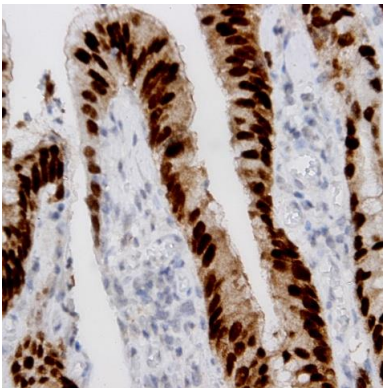
FOR RESEARCH USE ONLY.

AbboMax, Inc 2528 Qume Drive, Suite 8, San Jose, California 95131, USA
1 408-573-1898 (Tel). 1 408-573-1858 (Fax). www.abbomax.com info@abbomax.com

DATA ATTACHMENTS



Western Blot: The mouse brain tissue lysate (20 ug/lane) resolved onto 10% SDS-PAGE, transferred onto NC membrane, and followed by an immunoblotting with Rabbit anti PTEN (CT) antibody (Cat#601-850) at 1:500. Observed a major immunoreactive band at molecular weight ~90 kDa.



Immunohistochemistry: Human Colon carcinoma (FFPE) stained with Rabbit anti-pTEN (Cat# 601-850) at 1:200 for 10 min @ RT. Staining of formalin-fixed tissue requires boiling tissue sections in 10 mM Citrate Buffer, pH 6.0 for 10 min followed by cooling at RT for 20 min.

REFERENCES

FOR RESEARCH USE ONLY.