



Rabbit anti IGHA1 Polyclonal Antibody

Alternative Name(s): Immunoglobulin heavy constant alpha 1; IgA1

Order Information

- **Description:** IGHA1
- **Catalogue:** 601-730
- **Lot:** See label
- **Size:** 100ug/200ul
- **Host:** Rabbit
- **Clone:** nan
- **Application:** IHC(P), WB, ELISA, FC
- **Reactivity:** Hu

ANTIGEN PREPARATION

A synthetic peptide corresponding to C-terminus of human IGHA1.

BACKGROUND

The Ig alpha is the major immunoglobulin class in body secretions. It may serve both to defend against local infection and to prevent access of foreign antigens to the general immunologic system. The human alpha 1 and two allelic alpha 2 immunoglobulin heavy chain constant region genes contain three exons, each encoding a single constant region protein domain. Alignment of the alpha 1 and alpha 2 gene sequences reveals an unusual coupled deletion-duplication in the 5'-flanking region, which can be explained in terms of a slipped-strand mispairing model.

Comparison of nucleotide sequences of the alpha 1 gene and two alleles of the alpha 2 gene indicates a localized transfer of genetic information from the 3' end of the alpha 1 gene to one of the alpha 2 alleles, probably by a gene conversion.

PURIFICATION

The Rabbit IgG is purified by Epitope Affinity Purification

FORMULATION

This affinity purified antibody is supplied in sterile Phosphatebuffered saline (pH7.2) containing antibody stabilizer

SPECIFICITY

This antibody recognizes human IGHA1 protein. The other species are not tested.

STORAGE

The antibodies are stable for 24 months from date of receipt when stored at -20oC to -70oC. The antibodies can be stored at 2oC-8oC for three month without detectable loss of activity. Avoid repeated freezing-thawing cycles.

APPLICATIONS/SUGGESTED WORKING DILUTIONS*

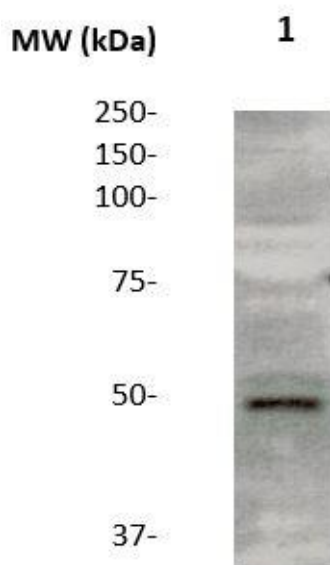
- Western Blot: 0.1-1 µg/ml
- ELISA: 0.01-0.1 µg/ml
- Immunoprecipitation: 2-5 µg/ml
- IHC: 2-10 µg/ml
- Flow cytometry: Not tested
- Molecular Weight: 53.0
- Positive Control: Kidney Tissue
- Cellular Location: Cell Membrane

*Optimal dilutions should be determined by researchers for the specific applications.

FOR RESEARCH USE ONLY.

AbboMax, Inc 2528 Qume Drive, Suite 8, San Jose, California 95131, USA
1 408-573-1898 (Tel). 1 408-573-1858 (Fax). www.abbomax.com info@abbomax.com

DATA ATTACHMENTS



Western Blot: The cell lysate derived from CCRF-CEM acute lymphoblast (20 ug/lane) was immunoprobed by Rabbit anti-IGHA1 (Cat#601-730) at 1:500. An immunoreactive band is observed around ~48 kDa.

REFERENCES

FOR RESEARCH USE ONLY.

AbboMax, Inc 2528 Qume Drive, Suite 8, San Jose, California 95131, USA
1 408-573-1898 (Tel). 1 408-573-1858 (Fax). www.abbomax.com info@abbomax.com