



## Rabbit anti DBF4 Polyclonal Antibody

Alternative Name(s): DBF4; DBF4A

### Order Information

- **Description:** DBF4
- **Catalogue:** 601-710
- **Lot:** See label
- **Size:** 100ug/200ul
- **Host:** Rabbit
- **Clone:** nan
- **Application:** IHC(P), WB
- **Reactivity:** Hu/Rt/Ms

### **ANTIGEN PREPARATION**

A synthetic peptide corresponding to the N-terminus of DBF4 protein. This sequence is identical to human, rat and mouse

### **BACKGROUND**

The human DBF4/ASK protein contains a putative site for phosphorylation by CDK, PEST protease cleavage sites, nuclear localization signals and a short-looped zinc finger-like domain. DBF4 interacts physically with CDC7 and MCM2 as a cyclin-like regulatory subunit of mammalian CDC7, thus it plays a key role in the regulation of DNA replication during the cell cycle in all eukaryotes. The DBF4/ASK is also identified as a novel determinant for melanoma development. The up-regulation of ASK/DBF4 is a novel molecular determinant with prognostic relevance that confers a proliferative advantage in melanoma.

### **PURIFICATION**

The Rabbit IgG is purified by Epitope Affinity Purification

### **FORMULATION**

This affinity purified antibody is supplied in sterile Phosphatebuffered saline (pH7.2) containing antibody stabilizer

### **SPECIFICITY**

This antibody recognizes ~77 kDa of DBF4 protein. It cross reacts to human, mouse and rat. The other species are not tested.

### **STORAGE**

The antibodies are stable for 24 months from date of receipt when stored at -20oC to -70oC. The antibodies can be stored at 2oC-8oC for three month without detectable loss of activity. Avoid repeated freezing-thawing cycles.

### **APPLICATIONS/SUGGESTED WORKING DILUTIONS\***

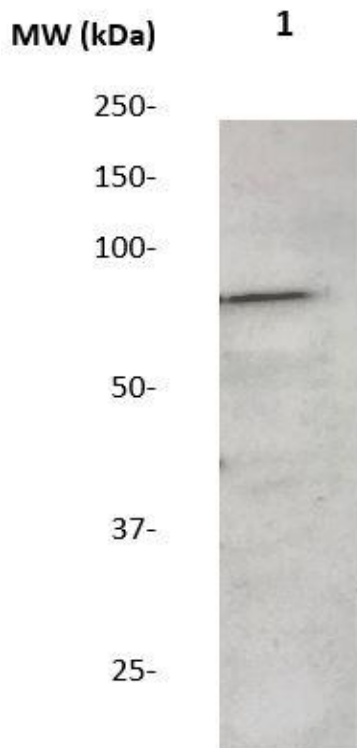
- Western Blot: 0.1-1 µg/ml
- ELISA: 0.01-0.1 µg/ml
- Immunoprecipitation: 2-5 µg/ml
- IHC: 2-10 µg/ml
- Flow cytometry: Not tested
- Molecular Weight: 77.0
- Positive Control: Kidney Tissue
- Cellular Location: Cell Membrane

\*Optimal dilutions should be determined by researchers for the specific applications.

### **FOR RESEARCH USE ONLY.**

AbboMax, Inc 2528 Qume Drive, Suite 8, San Jose, California 95131, USA  
1 408-573-1898 (Tel). 1 408-573-1858 (Fax). [www.abbomax.com](http://www.abbomax.com) [info@abbomax.com](mailto:info@abbomax.com)

## DATA ATTACHMENTS



Western Blot: The tissue extract derived from mouse spleen was immunoblotted by Rabbit anti DBF4 (Cat#601-710) at 1:500. An immunoreactive band is observed ~77 kDa.

## REFERENCES

### FOR RESEARCH USE ONLY.

AbboMax, Inc 2528 Qume Drive, Suite 8, San Jose, California 95131, USA  
1 408-573-1898 (Tel). 1 408-573-1858 (Fax). [www.abbomax.com](http://www.abbomax.com) [info@abbomax.com](mailto:info@abbomax.com)