



Rabbit anti CDC25C(pS216) Polyclonal Antibody

Alternative Name(s): Cell Division cycle 25c

Order Information

- **Description:** CDC25C(pS216)
- **Catalogue:** 601-640
- **Lot:** See label
- **Size:** 100ug/200ul
- **Host:** Rabbit
- **Clone:** nan
- **Application:** IHC(P), WB
- **Reactivity:** Hu

ANTIGEN PREPARATION

A synthetic peptide surrounding of --YRPSMPE-- of human CDC25C protein with a phosphorylation site Serine 216.

BACKGROUND

CDC25c is a tyrosine phosphatase and belongs to the CDC25 phosphatase family. The three homologues of CDC25 (CDC25A/B/C Cdc25) tyrosine phosphatases positively regulate the cell cycle by activating cyclin-dependent kinase/cyclin complexes CDK1 (CDC2). Cdc25C, a dual-specificity protein kinase controls entry into mitosis by dephosphorylating Cdc2 on both threonine 14 and tyrosine 15. Cdc25C is phosphorylated on serine 216 throughout interphase but not during mitosis. Serine 216 phosphorylation mediates the binding of 14-3-3 protein to Cdc25C, and Cdc25C/14-3-3 complexes are present throughout interphase but not during mitosis. C-TAK1 (for Cdc twenty-five C associated protein kinase) can phosphorylate Cdc25C on serine 216 in vitro.

PURIFICATION

The Rabbit IgG is purified by site-modified Epitope Affinity Purification.

FORMULATION

This affinity purified antibody is supplied in sterile Tris-buffered saline (pH7.2) containing antibody stabilizer

SPECIFICITY

This antibody recognizes human CDC25C(pS216) protein with a phosphorylation site Serine 216.

STORAGE

The antibodies are stable for 24 months from date of receipt when stored at -20oC to -70oC. The antibodies can be stored at 2oC-8oC for three month without detectable loss of activity. Avoid repeated freezing-thawing cycles.

APPLICATIONS/SUGGESTED WORKING DILUTIONS*

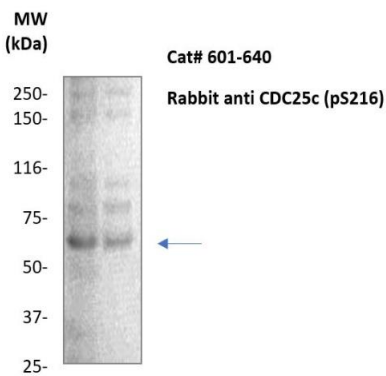
- Western Blot: 0.1-1 µg/ml
- ELISA: 0.01-0.1 µg/ml
- Immunoprecipitation: 2-5 µg/ml
- IHC: 2-10 µg/ml
- Flow cytometry: Not tested
- Molecular Weight: 60.0
- Positive Control: Kidney Tissue
- Cellular Location: Cell Membrane

*Optimal dilutions should be determined by researchers for the specific applications.

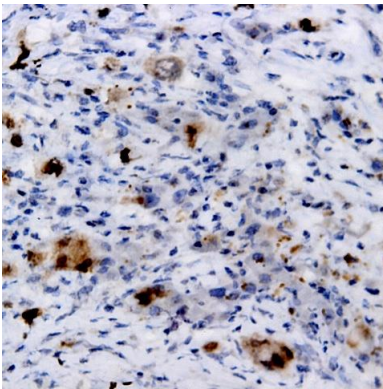
FOR RESEARCH USE ONLY.

AbboMax, Inc 2528 Qume Drive, Suite 8, San Jose, California 95131, USA
1 408-573-1898 (Tel). 1 408-573-1858 (Fax). www.abbomax.com info@abbomax.com

DATA ATTACHMENTS



Western Blot: The cell lysate derived from Rapamycin (100nM) stimulated Hela (20 ug/lane) was immunoblotted by Rabbit anti CDC25c (Cat# 601-640) antibody at 1:500. An immunoreactive band is observed ~60 kDa.



Immunohistochemistry: Human Breast carcinoma (FFPE) stained with Rabbit anti-CDC25c (pS216) antibody (Cat# 601-640) at 1:200 for 10 min @ RT. Staining of formalin-fixed tissue requires boiling tissue sections in 10 mM Citrate Buffer, pH 6.0 for 10 min followed by cooling at RT for 20 min.

REFERENCES

FOR RESEARCH USE ONLY.