



## Rabbit anti CDC25b(pS42) Polyclonal Antibody

Alternative Name(s): Cell Division cycle 25b

### Order Information

- **Description:** CDC25b(pS42)
- **Catalogue:** 601-610
- **Lot:** See label
- **Size:** 100ug/200ul
- **Host:** Rabbit
- **Clone:** nan
- **Application:** IHC(P), WB
- **Reactivity:** Hu

### **ANTIGEN PREPARATION**

A synthetic peptide surrounding of –LGSPV- of human CDC25B protein with a phosphorylation site Serine 42.

### **BACKGROUND**

Three homologues of CDC25 called CDC25A/B/C Cdc25 tyrosine phosphatases positively regulate the cell cycle by activating cyclin-dependent kinase/cyclin complexes CDK1 (CDC2). Dephosphorylation of threonine 14 and tyrosine 15 of CDK1 by CDC25 phosphatases is a key step in the activation of the CDK1-cyclin B protein kinase. Of the three mammalian Cdc25 isoforms, Cdc25A is phosphorylated by genotoxic stress-activated Chk1 or Chk2, which triggers its SCFbeta-TrCP-mediated degradation. CDC25B is degraded by the proteasome. CDK1-cyclin A phosphorylation targets CDC25B for degradation and this might be an important component of cell cycle regulation at the G2/M transition.

### **PURIFICATION**

The Rabbit IgG is purified by site-modified Epitope Affinity Purification.

### **FORMULATION**

This affinity purified antibody is supplied in sterile Tris-buffered saline (pH7.2) containing antibody stabilizer

### **SPECIFICITY**

This antibody recognizes phosphorylated Serine 42 of human CDC25B protein. It does not recognize the nonphosphorylated CDC25B.

### **STORAGE**

The antibodies are stable for 24 months from date of receipt when stored at –20oC to –70oC. The antibodies can be stored at 2oC-8oC for three month without detectable loss of activity. Avoid repeated freezing-thawing cycles.

### **APPLICATIONS/SUGGESTED WORKING DILUTIONS\***

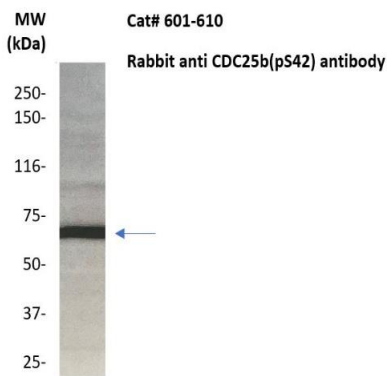
- Western Blot: 0.1-1 µg/ml
- ELISA: 0.01-0.1 µg/ml
- Immunoprecipitation: 2-5 µg/ml
- IHC: 2-10 µg/ml
- Flow cytometry: Not tested
- Molecular Weight: 60.0
- Positive Control: Kidney Tissue
- Cellular Location: Cell Membrane

\*Optimal dilutions should be determined by researchers for the specific applications.

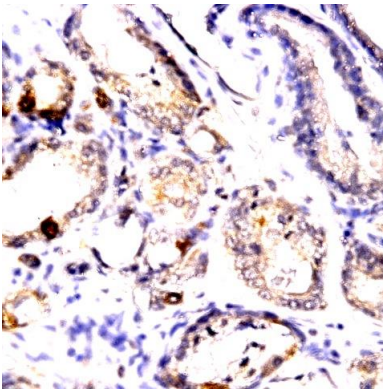
### **FOR RESEARCH USE ONLY.**

AbboMax, Inc 2528 Qume Drive, Suite 8, San Jose, California 95131, USA  
1 408-573-1898 (Tel). 1 408-573-1858 (Fax). [www.abbomax.com](http://www.abbomax.com) [info@abbomax.com](mailto:info@abbomax.com)

## DATA ATTACHMENTS



Western Blot: The cell lysate derived from Rapamycin (100nM) stimulated Hela (20 ug/lane) was immunoblotted by Rabbit anti CDC25b (pS42) antibody (Cat#601-610) at 1:500. An immunoreactive band is observed ~65 kDa.



Immunohistochemistry: Human Breast carcinoma (FFPE) stained with Rabbit anti-CDC25b(pS42) (Cat# 601-610) at 1:200 for 10 min @ RT. Staining of formalin-fixed tissue requires boiling tissue sections in 10 mM Citrate Buffer, pH 6.0 for 10 min followed by cooling at RT for 20 min.

## REFERENCES

### FOR RESEARCH USE ONLY.