



Rabbit anti FOXA-1 Polyclonal Antibody

Alternative Name(s): Forkhead box A1

Order Information

- **Description:** FOXA-1
- **Catalogue:** 601-570
- **Lot:** See label
- **Size:** 100ug/200ul
- **Host:** Rabbit
- **Clone:** nan
- **Application:** IHC(P), WB
- **Reactivity:** Hu

ANTIGEN PREPARATION

A synthetic peptide corresponding to the C-terminus of human FOXA1 protein. This sequence is identical to rat, mouse and human origins.

BACKGROUND

The forkhead box gene encodes a member of the forkhead class of DNA-binding proteins. These hepatocyte nuclear factors are transcriptional activators for liver-specific transcripts such as albumin and transthyretin, and they also interact with chromatin. Similar family members in mice have roles in the regulation of metabolism and in the differentiation of the pancreas and liver. FOXA1 plays an important role in breast cancer. The FOXA subfamily is composed of the transcription factors FOXA1, A2, A3. They were discovered as the regulators of hepatic genes. The sumoylation of Foxa1 is observed in several breast cancer cell lines. Foxa1 is modified by sumoylation on lysine, K6, and the SUMO modification of Foxa1 modulates the activity of Foxa1 on its target genes in breast cancer cells.

PURIFICATION

The Rabbit IgG is purified by Epitope Affinity Purification

FORMULATION

This affinity purified antibody is supplied in sterile Phosphatebuffered saline (pH7.2) containing antibody stabilizer

SPECIFICITY

This antibody recognizes ~50 kDa of FOXA1 protein. It also reacts with human, mouse and rat. The other species are not tested.

STORAGE

The antibodies are stable for 24 months from date of receipt when stored at -20oC to -70oC. The antibodies can be stored at 2oC-8oC for three month without detectable loss of activity. Avoid repeated freezing-thawing cycles.

APPLICATIONS/SUGGESTED WORKING DILUTIONS*

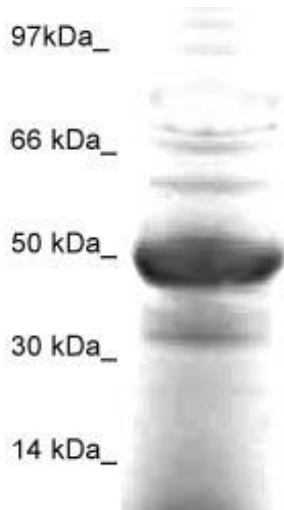
- Western Blot: 0.1-1 µg/ml
- ELISA: 0.01-0.1 µg/ml
- Immunoprecipitation: 2-5 µg/ml
- IHC: 2-10 µg/ml
- Flow cytometry: Not tested
- Molecular Weight: 50.0
- Positive Control: Kidney Tissue
- Cellular Location: Cell Membrane

*Optimal dilutions should be determined by researchers for the specific applications.

FOR RESEARCH USE ONLY.

AbboMax, Inc 2528 Qume Drive, Suite 8, San Jose, California 95131, USA
1 408-573-1898 (Tel). 1 408-573-1858 (Fax). www.abbomax.com info@abbomax.com

DATA ATTACHMENTS



WB: HEK293 cell lysate stained by RbxFOXA1 @ 1:1000

Western Blot: The whole lysate derived from HEK293 (20 ug/lane) immunoblotted by Rabbit anti-FOXA-1 antibody (Cat# 601-570) at 1:500. Observed a major immunoreactive band at molecular weight ~50 kDa.

REFERENCES

FOR RESEARCH USE ONLY.