



Rabbit anti GATA-6 Polyclonal Antibody

Alternative Name(s): GATA binding protein 6; globin transcription factor 6;

Order Information

- **Description:** GATA-6
- **Catalogue:** 601-560
- **Lot:** See label
- **Size:** 100ug/200ul
- **Host:** Rabbit
- **Clone:** nan
- **Application:** IHC(P), WB
- **Reactivity:** Hu

ANTIGEN PREPARATION

A synthetic peptide of human GATA6 protein

BACKGROUND

GATA6 is a member of a small family of zinc finger transcription factors that play an important role in the regulation of cellular differentiation and organogenesis during vertebrate development. GATA6 is expressed during early embryogenesis and localizes to endo- and mesodermally derived cells during later embryogenesis and thereby plays an important role in gut, lung, and heart development. Mutations in this gene are associated with several congenital defects.

PURIFICATION

The Rabbit IgG is purified by Epitope Affinity Purification

FORMULATION

This affinity purified antibody is supplied in sterile Phosphatebuffered saline (pH7.2) containing antibody stabilizer

SPECIFICITY

This antibody recognizes human GATA-6 protein. The other species are not tested.

STORAGE

The antibodies are stable for 24 months from date of receipt when stored at -20°C to -70°C . The antibodies can be stored at 2°C - 8°C for three month without detectable loss of activity. Avoid repeated freezing-thawing cycles.

APPLICATIONS/SUGGESTED WORKING DILUTIONS*

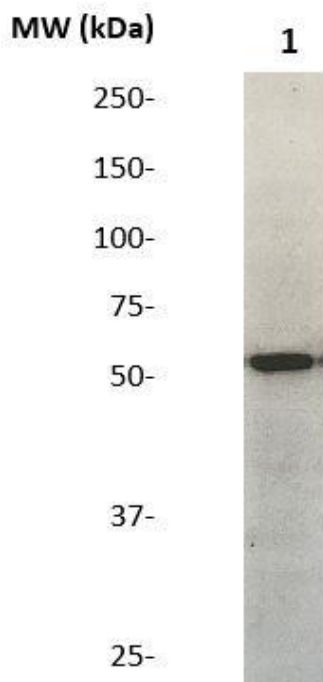
- Western Blot: 0.1-1 $\mu\text{g/ml}$
- ELISA: 0.01-0.1 $\mu\text{g/ml}$
- Immunoprecipitation: 2-5 $\mu\text{g/ml}$
- IHC: 2-10 $\mu\text{g/ml}$
- Flow cytometry: Not tested
- Molecular Weight: 60.0
- Positive Control: Kidney Tissue
- Cellular Location: Cell Membrane

*Optimal dilutions should be determined by researchers for the specific applications.

FOR RESEARCH USE ONLY.

AbboMax, Inc 2528 Qume Drive, Suite 8, San Jose, California 95131, USA
1 408-573-1898 (Tel). 1 408-573-1858 (Fax). www.abbomax.com info@abbomax.com

DATA ATTACHMENTS



Western Blot: The whole lysate derived from MCF7 (20 ug/lane) immunoblotted by Rabbit anti – GATA-6 antibody (Cat# 601-560) at 1:500. Observed a major immunoreactive band at molecular weight ~60kDa.

REFERENCES

FOR RESEARCH USE ONLY.