



Rabbit anti SOX-14 Polyclonal Antibody

Alternative Name(s): SRY (sex determining region Y)-box 14

Order Information

- **Description:** SOX-14
- **Catalogue:** 601-540
- **Lot:** See label
- **Size:** 100ug/200ul
- **Host:** Rabbit
- **Clone:** nan
- **Application:** IHC(P), WB
- **Reactivity:** Hu, Rt, Ms

ANTIGEN PREPARATION

A synthetic peptide corresponding to the Internal sequence (from 80aa-120aa) of human SOX14 protein. This sequence is identical in human, mouse and rat species.

BACKGROUND

The forkhead box gene encodes a member of the forkhead class of DNA-binding proteins. These hepatocyte nuclear factors are transcriptional activators for liver-specific transcripts such as albumin and transthyretin, and they also interact with chromatin. Similar family members in mice have roles in the regulation of metabolism and in the differentiation of the pancreas and liver. FOXA1 plays an important role in breast cancer. The FOXA subfamily is composed of the transcription factors FOXA1, A2, A3. They were discovered as the regulators of hepatic genes. The sumoylation of Foxa1 is observed in several breast cancer cell lines. Foxa1 is modified by sumoylation on lysine, K6, and the SUMO modification of Foxa1 modulates the activity of Foxa1 on its target genes in breast cancer cells.

PURIFICATION

The Rabbit IgG is purified by Epitope Affinity Purification

FORMULATION

This affinity purified antibody is supplied in sterile Phosphatebuffered saline (pH7.2) containing antibody stabilizer

SPECIFICITY

This antibody recognizes ~26 kDa of SOX14 protein. It cross-reacts to human, mouse and rat. The other species are not tested.

STORAGE

The antibodies are stable for 24 months from date of receipt when stored at -20oC to -70oC. The antibodies can be stored at 2oC-8oC for three month without detectable loss of activity. Avoid repeated freezing-thawing cycles.

APPLICATIONS/SUGGESTED WORKING DILUTIONS*

- Western Blot: 0.1-1 µg/ml
- ELISA: 0.01-0.1 µg/ml
- Immunoprecipitation: 2-5 µg/ml
- IHC: 2-10 µg/ml
- Flow cytometry: Not tested
- Molecular Weight: 26.0
- Positive Control: Kidney Tissue
- Cellular Location: Cell Membrane

*Optimal dilutions should be determined by researchers for the specific applications.

FOR RESEARCH USE ONLY.

AbboMax, Inc 2528 Qume Drive, Suite 8, San Jose, California 95131, USA
1 408-573-1898 (Tel). 1 408-573-1858 (Fax). www.abbomax.com info@abbomax.com

DATA ATTACHMENTS

MW (kDa)

1

150-

100-

75-

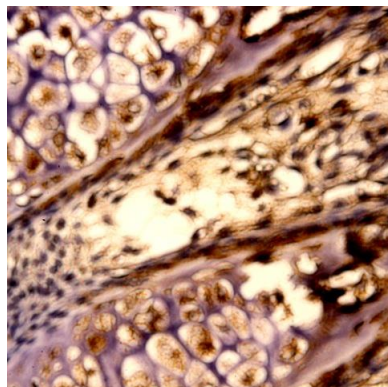
50-

37-

25-



Western Blot: The whole Cell lysate derived from HepG2 (20 ug/lane) was separated in 10% SDS-PAGE, transferred onto NC membrane, and immunoblotted by Rabbit anti-SOX-14 antibody (Cat#601-540) at 1:500. An immunoreactive band around ~26 kDa was observed.



Immunohistochemistry: Mouse embryonic tissue (FFPE) stained with Rabbit anti-SOX-14 antibody (Cat# 601-540) at 1:200 for 10 min @ RT. Staining of formalin-fixed tissue requires boiling tissue sections in 10 mM Citrate Buffer, pH 6.0 for 10 min followed by cooling at RT for 20 min.

REFERENCES

FOR RESEARCH USE ONLY.

AbboMax, Inc 2528 Qume Drive, Suite 8, San Jose, California 95131, USA
1 408-573-1898 (Tel). 1 408-573-1858 (Fax). www.abbomax.com info@abbomax.com