



Rabbit anti SOX-2 Polyclonal Antibody

Alternative Name(s): SRY (sex determining region Y)-box 2

Order Information

- **Description:** SOX-2
- **Catalogue:** 601-490
- **Lot:** See label
- **Size:** 100ug/200ul
- **Host:** Rabbit
- **Clone:** nan
- **Application:** IHC(P), WB
- **Reactivity:** Hu, Ms, Rt, Ck, Bv, Canis

ANTIGEN PREPARATION

A synthetic peptide derived from N-terminus of Human SOX-2 protein. This sequence is identical among human, rat, mouse, bovine, chicken, and dog.

BACKGROUND

The SOX2 is a transcription factor, a member of the SRY-related HMG-box (SOX) family involved in the regulation of embryonic development and in the determination of cell fate. Mutations in this gene have been associated with bilateral anophthalmia, a severe form of structural eye malformation. When SOX-2 is expressed in self-renewing progenitor cells, it acts to inhibit neuronal differentiation. Sox-2 is considered as an appropriate cell-specific marker in vivo dynamics of the neural progenitor cell compartment as well as in the adult

PURIFICATION

The Rabbit IgG is purified by Epitope Affinity Purification

FORMULATION

This affinity purified antibody is supplied in sterile Phosphatebuffered saline (pH7.2) containing antibody stabilizer

SPECIFICITY

This antibody recognizes ~35 kDa of human SOX-2 protein. It also reacts with mouse and rat. The other species are not tested.

STORAGE

The antibodies are stable for 24 months from date of receipt when stored at -20oC to -70oC. The antibodies can be stored at 2oC-8oC for three month without detectable loss of activity. Avoid repeated freezing-thawing cycles.

APPLICATIONS/SUGGESTED WORKING DILUTIONS*

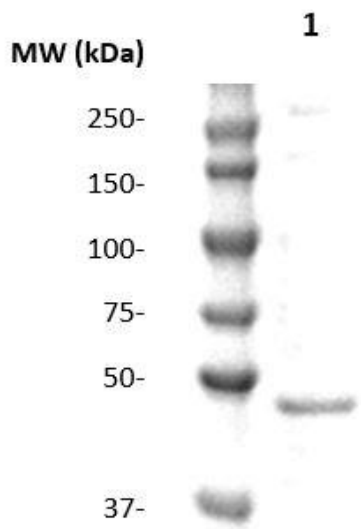
- Western Blot: 0.1-1 µg/ml
- ELISA: 0.01-0.1 µg/ml
- Immunoprecipitation: 2-5 µg/ml
- IHC: 2-10 µg/ml
- Flow cytometry: Not tested
- Molecular Weight: 35.0
- Positive Control: Kidney Tissue
- Cellular Location: Cell Membrane

*Optimal dilutions should be determined by researchers for the specific applications.

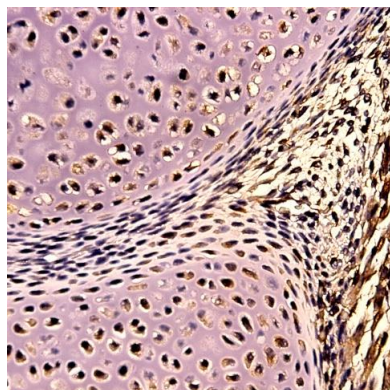
FOR RESEARCH USE ONLY.

AbboMax, Inc 2528 Qume Drive, Suite 8, San Jose, California 95131, USA
1 408-573-1898 (Tel). 1 408-573-1858 (Fax). www.abbomax.com info@abbomax.com

DATA ATTACHMENTS



Western Blot: The whole cell lysate derived from embryonic mouse brain immunoblotted by Rabbit anti-SOX-2 (Cat#601-490) at 1:500. Observed a major immunoreactive band at molecular weight ~35 kDa.



Immunohistochemistry: Mouse embryo tissue (FFPE) stained with Rabbit anti-SOX-2 antibody (Cat#601-490) at 1:200 for 10 min @ RT. Staining of formalin-fixed tissue requires boiling tissue sections in 10 mM Citrate Buffer, pH 6.0 for 10 min followed by cooling at RT for 20 min.

REFERENCES

FOR RESEARCH USE ONLY.

AbboMax, Inc 2528 Qume Drive, Suite 8, San Jose, California 95131, USA
1 408-573-1898 (Tel). 1 408-573-1858 (Fax). www.abbomax.com info@abbomax.com