



Rabbit anti OCT-1 Polyclonal Antibody

Alternative Name(s): POU2F1

Order Information

- **Description:** OCT-1
- **Catalogue:** 601-440
- **Lot:** See label
- **Size:** 100ug/200ul
- **Host:** Rabbit
- **Clone:** nan
- **Application:** IHC(P), WB
- **Reactivity:** Hu

ANTIGEN PREPARATION

A synthetic peptide corresponding to C-terminus of OCT-1 protein from human, mouse and rat origins.

BACKGROUND

Oct -1, a member of POU transcription factors, was identified as a DNA-binding protein that activates gene transcription via a cis-element containing an Octamer motif ATGCAAAT. It is expressed in embryonic stem (ES) cells and germ cells, and its expression is required to sustain cell self-renewal and pluripotency. Oct-3/4 is the most recognized marker for totipotent ES cells.

PURIFICATION

The Rabbit IgG is purified by Epitope Affinity Purification

FORMULATION

This affinity purified antibody is supplied in sterile Phosphatebuffered saline (pH7.2) containing antibody stabilizer

SPECIFICITY

This antibody recognizes ~89 kDa of OCT-1 protein from human, rat and mouse origins. It does not cross react with OCT-4, OCT-2. The other species are not tested

STORAGE

The antibodies are stable for 24 months from date of receipt when stored at -20oC to -70oC. The antibodies can be stored at 2oC-8oC for three month without detectable loss of activity. Avoid repeated freezing-thawing cycles.

APPLICATIONS/SUGGESTED WORKING DILUTIONS*

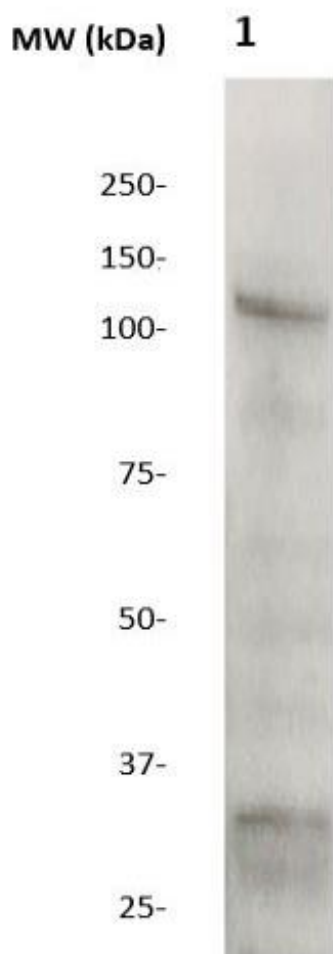
- Western Blot: 0.1-1 µg/ml
- ELISA: 0.01-0.1 µg/ml
- Immunoprecipitation: 2-5 µg/ml
- IHC: 2-10 µg/ml
- Flow cytometry: Not tested
- Molecular Weight: 98.0
- Positive Control: Kidney Tissue
- Cellular Location: Cell Membrane

*Optimal dilutions should be determined by researchers for the specific applications.

FOR RESEARCH USE ONLY.

AbboMax, Inc 2528 Qume Drive, Suite 8, San Jose, California 95131, USA
1 408-573-1898 (Tel). 1 408-573-1858 (Fax). www.abbomax.com info@abbomax.com

DATA ATTACHMENTS



Western Blot: The tissue lysate derived from mouse kidney (20 ug/lane) was immunoprobed by Rabbit anti-OCT-1 (Cat#601-440) at 1:500. An immunoreactive band is observed around ~89 kDa.

REFERENCES

FOR RESEARCH USE ONLY.

AbboMax, Inc 2528 Qume Drive, Suite 8, San Jose, California 95131, USA
1 408-573-1898 (Tel). 1 408-573-1858 (Fax). www.abbomax.com info@abbomax.com