



## Rabbit anti MMP-27 Polyclonal Antibody

Alternative Name(s): Matrix metalloproteinase 27

### Order Information

- **Description:** MMP-27
- **Catalogue:** 601-390
- **Lot:** See label
- **Size:** 100ug/200ul
- **Host:** Rabbit
- **Clone:** nan
- **Application:** IHC(P), WB
- **Reactivity:** Hu

### **ANTIGEN PREPARATION**

A synthetic peptide corresponding to C-term of human MMP-27

### **BACKGROUND**

Proteins of the matrix metalloproteinase (MMP) family are involved in the breakdown of extracellular matrix in normal physiological processes, such as embryonic development, reproduction, and tissue remodeling, as well as in disease processes, such as arthritis and metastasis. Most MMP's are secreted as inactive proproteins which are activated when cleaved by extracellular proteinases. It is thought that the protein encoded by this gene is cleaved at both ends to yield the active enzyme, but this processing has not been fully described. The enzyme degrades soluble and insoluble elastin. MMP-27 (matrix metalloproteinase 27) is a 513 amino acid secreted protein that is expressed in B-cells. Belonging to the peptidase M10A family, MMP-27 contains four hemopexin-like domains, which is suggested to be involved in substrate recognition. MMP-27, along with other MMP family members, is associated with breast cancer development and tumor progression.

### **PURIFICATION**

The Rabbit IgG is purified by Epitope Affinity Purification

### **FORMULATION**

This affinity purified antibody is supplied in sterile Phosphatebuffered saline (pH7.2) containing antibody stabilizer

### **SPECIFICITY**

This antibody recognizes human MMP-27 protein. The other species are not tested.

### **STORAGE**

The antibodies are stable for 24 months from date of receipt when stored at -20oC to -70oC. The antibodies can be stored at 2oC-8oC for three month without detectable loss of activity. Avoid repeated freezing-thawing cycles.

### **APPLICATIONS/SUGGESTED WORKING DILUTIONS\***

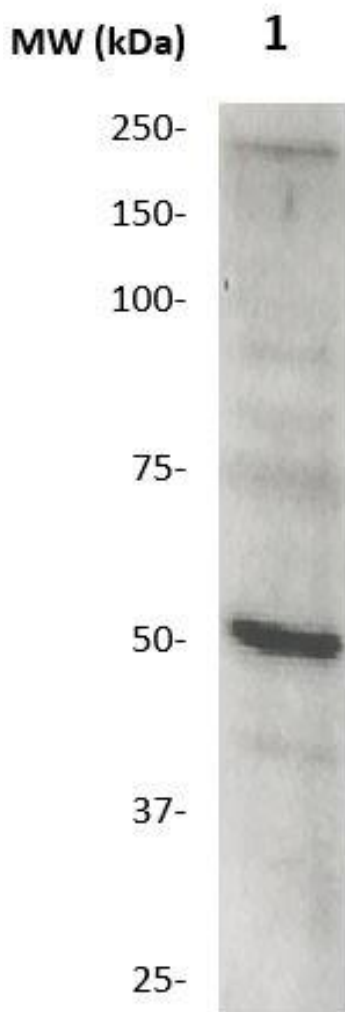
- Western Blot: 0.1-1 µg/ml
- ELISA: 0.01-0.1 µg/ml
- Immunoprecipitation: 2-5 µg/ml
- IHC: 2-10 µg/ml
- Flow cytometry: Not tested
- Molecular Weight: 50.0
- Positive Control: Kidney Tissue
- Cellular Location: Cell Membrane

\*Optimal dilutions should be determined by researchers for the specific applications.

### **FOR RESEARCH USE ONLY.**

AbboMax, Inc 2528 Qume Drive, Suite 8, San Jose, California 95131, USA  
1 408-573-1898 (Tel). 1 408-573-1858 (Fax). [www.abbomax.com](http://www.abbomax.com) [info@abbomax.com](mailto:info@abbomax.com)

**DATA ATTACHMENTS**



Western Blot: The whole lysate derived from HT29 (20 ug/lane) immunoblotted by Rabbit anti – MMP-27 (Cat# 601-390) at 1:500. Observed a major immunoreactive band at molecular weight ~50kDa.

**REFERENCES**

**FOR RESEARCH USE ONLY.**

AbboMax, Inc 2528 Qume Drive, Suite 8, San Jose, California 95131, USA  
1 408-573-1898 (Tel). 1 408-573-1858 (Fax). [www.abbomax.com](http://www.abbomax.com) [info@abbomax.com](mailto:info@abbomax.com)