



## Rabbit anti VASA Polyclonal Antibody

Alternative Name(s): VASA Protein, DEAD-box protein 4(DDX4), Mab4611

### Order Information

- **Description:** VASA
- **Catalogue:** 601-360
- **Lot:** See label
- **Size:** 100ug/200ul
- **Host:** Rabbit
- **Clone:** nan
- **Application:** IHC(P), WB
- **Reactivity:** Hu

### **ANTIGEN PREPARATION**

A synthetic peptide corresponding to the N-terminus of human VASA protein. This sequence is identical within human, rat, mouse.

### **BACKGROUND**

The VASA gene, originally identified in *Drosophila*, encodes a member of the DEAD box family of ATP-dependent RNA helicases. The expression of VASA in invertebrate and vertebrate species is restricted to germ cells and is required for germ cell formation. VASA is therefore a highly specific marker of germ cells. This protein is located in cytoplasmic and is present only in migratory primordial germ cells in the region of the gonadal ridge. On testicular sections, VASA expression is the highest in spermatogonia, reduced in spermatocytes, low in spermatids and absent in sperm. In the ovary, VASA expression is the highest in oogonia but persists throughout oogenesis. VASA has a glycine-rich N-terminus with multiple repeats of an RGG motif believed to function in RNA binding. The phosphorylation of VASA at N-terminus may regulate the translation of intricate mRNAs that are essential for differentiation.

### **PURIFICATION**

The Rabbit IgG is purified by Epitope Affinity Purification

### **FORMULATION**

This affinity purified antibody is supplied in sterile Phosphatebuffered saline (pH7.2) containing antibody stabilizer

### **SPECIFICITY**

This antibody recognizes ~76 kDa of VASA protein. This antibody also reacts with human, mouse and rat. The other species are not tested.

### **STORAGE**

The antibodies are stable for 24 months from date of receipt when stored at -20°C to -70°C. The antibodies can be stored at 2°C-8°C for three month without detectable loss of activity. Avoid repeated freezing-thawing cycles.

### **APPLICATIONS/SUGGESTED WORKING DILUTIONS\***

- Western Blot: 0.1-1 µg/ml
- ELISA: 0.01-0.1 µg/ml
- Immunoprecipitation: 2-5 µg/ml
- IHC: 2-10 µg/ml
- Flow cytometry: Not tested
- Molecular Weight: 76.0
- Positive Control: Kidney Tissue
- Cellular Location: Cell Membrane

### **FOR RESEARCH USE ONLY.**

AbboMax, Inc 2528 Qume Drive, Suite 8, San Jose, California 95131, USA  
1 408-573-1898 (Tel). 1 408-573-1858 (Fax). [www.abbomax.com](http://www.abbomax.com) [info@abbomax.com](mailto:info@abbomax.com)

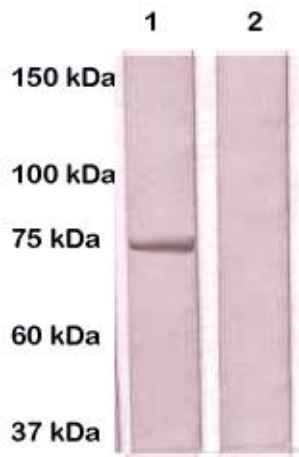


\*Optimal dilutions should be determined by researchers for the specific applications.

**FOR RESEARCH USE ONLY.**

AbboMax, Inc 2528 Qume Drive, Suite 8, San Jose, California 95131, USA  
1 408-573-1898 (Tel). 1 408-573-1858 (Fax). [www.abbomax.com](http://www.abbomax.com) [info@abbomax.com](mailto:info@abbomax.com)

## DATA ATTACHMENTS



Western Blot: The cell lysate derived from mouse embryonic germ cell (20 ug/lane) was immunoprobed by Rabbit anti-VASA antibody (Cat#601-360) at 1:500. An immunoreactive band is observed around ~76kDa (lane 1). This band is depleted by pre-incubation with immunizing peptide (Lane 2).

## REFERENCES

### FOR RESEARCH USE ONLY.

AbboMax, Inc 2528 Qume Drive, Suite 8, San Jose, California 95131, USA  
1 408-573-1898 (Tel). 1 408-573-1858 (Fax). [www.abbomax.com](http://www.abbomax.com) [info@abbomax.com](mailto:info@abbomax.com)