



Rabbit anti EWSR Polyclonal Antibody

Alternative Name(s): EWSR1; Ewing sarcoma breakpoint region 1

Order Information

- **Description:** EWSR
- **Catalogue:** 600-820
- **Lot:** See label
- **Size:** 100ug/200ul
- **Host:** Rabbit
- **Clone:** nan
- **Application:** IHC(P), WB
- **Reactivity:** Hu, Ms, Rt

ANTIGEN PREPARATION

A synthetic peptide corresponding to the internal segment of EWSR1 protein. This sequence is identical among human, rat, mouse and dog species.

BACKGROUND

The EWSR1 gene encodes a putative RNA binding protein. Mutation in this gene causes Ewing sarcoma and neuroectodermal and various other tumors. This gene is involved in a number of different sarcomas as a result of chromosomal translocations. EWSR1 is fused to an ETS transcription factor (FLI-1, ERG, ETV-1, E1AF or FEV) in Ewing sarcoma; to activating transcription factor-1 (ATF-1) in soft tissue clear cell sarcoma; to Wilms Tumor -1 (WT1) in desmoplastic small round cell; to nuclear receptor 4A3 (NR4A3) in extraskelatal myxoid chondrosarcoma, and to C/EBP-homologous protein (CHOP) in myxoid liposarcoma. EWSR1 genes are required for mitotic integrity and survival of neural cells in the early embryonic development, and that the involvement of EWSR1 in mitotic stability is conserved from zebrafish to human.

PURIFICATION

The Rabbit IgG is purified by Epitope Affinity Purification

FORMULATION

This affinity purified antibody is supplied in sterile Phosphatebuffered saline (pH7.2) containing antibody stabilizer

SPECIFICITY

This antibody recognizes ~70 kDa of EWSR1 protein. It also cross reacts with human, mouse and rat tissues. The other species are not tested.

STORAGE

The antibodies are stable for 24 months from date of receipt when stored at -20oC to -70oC. The antibodies can be stored at 2oC-8oC for three month without detectable loss of activity. Avoid repeated freezing-thawing cycles.

APPLICATIONS/SUGGESTED WORKING DILUTIONS*

- Western Blot: 0.1-1 µg/ml
- ELISA: 0.01-0.1 µg/ml
- Immunoprecipitation: 2-5 µg/ml
- IHC: 2-10 µg/ml
- Flow cytometry: Not tested
- Molecular Weight: 70.0
- Positive Control: Kidney Tissue
- Cellular Location: Cell Membrane

*Optimal dilutions should be determined by researchers for the specific applications.

FOR RESEARCH USE ONLY.

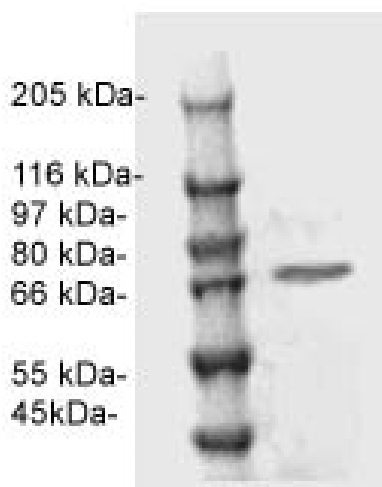
AbboMax, Inc 2528 Qume Drive, Suite 8, San Jose, California 95131, USA
1 408-573-1898 (Tel). 1 408-573-1858 (Fax). www.abbomax.com info@abbomax.com



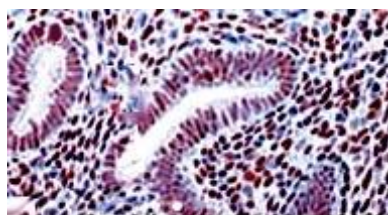
FOR RESEARCH USE ONLY.

AbboMax, Inc 2528 Qume Drive, Suite 8, San Jose, California 95131, USA
1 408-573-1898 (Tel). 1 408-573-1858 (Fax). www.abbomax.com info@abbomax.com

DATA ATTACHMENTS



Western Blot: The whole cell lysate derived from mouse brain tissue was separated in 10% SDS-PAGE, transferred onto NC membrane, and immunoblotted by Rabbit anti-EWSR1 (Cat#600-820) antibody at 1:500. An immunoreactive band around ~70 kDa was observed.



Immunohistochemistry: Human uterus (FFPE) stained with Rabbit anti-EWSR1 antibody (Cat#600-820) at 1:200 for 10 min @ RT. Staining of formalin-fixed tissue requires boiling tissue sections in 10 mM Citrate Buffer, pH 6.0 for 10 min followed by cooling at RT for 20 min.

IHC: Human uterus tissue stained with Anti-EWSR1 antibody, (Cat# 600-820) at 1:200 for 10 min @ RT. Staining of formalin-fixed tissue requires boiling tissue sections in 10 mM Citrate Buffer, pH 6.0 for 10 min followed by cooling at RT for 20 min.

REFERENCES

FOR RESEARCH USE ONLY.

AbboMax, Inc 2528 Qume Drive, Suite 8, San Jose, California 95131, USA
1 408-573-1898 (Tel). 1 408-573-1858 (Fax). www.abbomax.com info@abbomax.com