



Rabbit anti Plectin Polyclonal Antibody

Alternative Name(s): PLTN; PLEC1

Order Information

- **Description:** Plectin
- **Catalogue:** 600-770
- **Lot:** See label
- **Size:** 100ug/200ul
- **Host:** Rabbit
- **Clone:** nan
- **Application:** IHC(P), WB
- **Reactivity:** Hu, Ms, Rt

ANTIGEN PREPARATION

A synthetic peptide corresponding to the C-term portion of human Plectin. This sequence is identical to rat, mouse and human origins.

BACKGROUND

Plectin is a cytoskeleton linker protein expressed in a variety of tissues including skin, muscle, and nerves. Plectin can bind to several molecules (intermediate filaments) that make up the cytoskeleton. Mutations in its gene are associated with epidermolysis bullosa simplex with late-onset muscular dystrophy. In certain skin cells, this protein is an essential part of hemidesmosomes, which attach the network of intermediate filaments to the cell membrane. It is also a component of desmosomes, which form junctions between neighboring cells. As part of these structures, plectin plays a critical role in anchoring the outer layer of the skin (the epidermis) to underlying layers. Mutations in the PLEC1 gene also cause at least two other forms of epidermolysis bullosa

PURIFICATION

The Rabbit IgG is purified by Epitope Affinity Purification

FORMULATION

This affinity purified antibody is supplied in sterile Phosphatebuffered saline (pH7.2) containing antibody stabilizer

SPECIFICITY

This antibody recognizes ~500 kDa of Plectin protein. It reacts with human, mouse and rat. The other species are not tested.

STORAGE

The antibodies are stable for 24 months from date of receipt when stored at -20oC to -70oC. The antibodies can be stored at 2oC-8oC for three month without detectable loss of activity. Avoid repeated freezing-thawing cycles.

APPLICATIONS/SUGGESTED WORKING DILUTIONS*

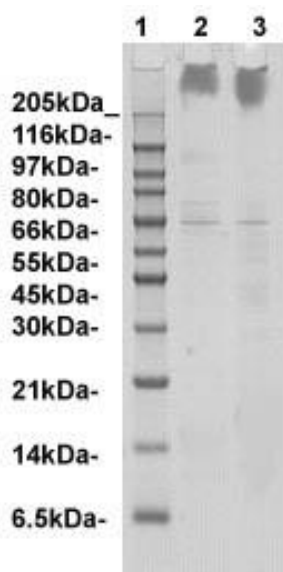
- Western Blot: 0.1-1 µg/ml
- ELISA: 0.01-0.1 µg/ml
- Immunoprecipitation: 2-5 µg/ml
- IHC: 2-10 µg/ml
- Flow cytometry: Not tested
- Molecular Weight: 500.0
- Positive Control: Kidney Tissue
- Cellular Location: Cell Membrane

*Optimal dilutions should be determined by researchers for the specific applications.

FOR RESEARCH USE ONLY.

AbboMax, Inc 2528 Qume Drive, Suite 8, San Jose, California 95131, USA
1 408-573-1898 (Tel). 1 408-573-1858 (Fax). www.abbomax.com info@abbomax.com

DATA ATTACHMENTS



WB: Brain tissue lysate
(lane 2: Mouse; Lane 3: Rat)
stained by RbxPlectin at
1:500 dilution.

Western Blot: The whole lysate derived from brain tissue (mouse and rat) (20 ug/lane) immunoblotted by Rabbit anti – Plectin antibody (Cat#600-770) at 1:500. Observed a major immunoreactive band at molecular weight >200 kDa.

REFERENCES

FOR RESEARCH USE ONLY.

AbboMax, Inc 2528 Qume Drive, Suite 8, San Jose, California 95131, USA
1 408-573-1898 (Tel). 1 408-573-1858 (Fax). www.abbomax.com info@abbomax.com