



Rabbit anti L-Plastin Polyclonal Antibody

Alternative Name(s): Lymphocyte cytosolic protein 1; LCP1

Order Information

- **Description:** L-Plastin
- **Catalogue:** 600-760
- **Lot:** See label
- **Size:** 100ug/200ul
- **Host:** Rabbit
- **Clone:** nan
- **Application:** IHC(P), WB
- **Reactivity:** Hu, Ms, Rt

ANTIGEN PREPARATION

A synthetic peptide corresponding to the C-terminus of human L-plastin protein. This sequence is identical to rat, mouse and human origins.

BACKGROUND

L-plastin is a protein normally found in leukocytes (white blood cells) only. In these cells L-plastin regulates cell movement by interacting with actins, a major cellular protein that directly controls cell movement. Normal breast epithelial cells do not have L-plastin. It only presents in breast carcinoma cells. Furthermore, the amount of L-plastin contained in the cells correlates with the degree of invasiveness of these cells. Therefore, it appears that L-plastin may be important for the motility of breast cancer cells.

PURIFICATION

The Rabbit IgG is purified by Epitope Affinity Purification

FORMULATION

This affinity purified antibody is supplied in sterile Phosphatebuffered saline (pH7.2) containing antibody stabilizer

SPECIFICITY

This antibody recognizes ~70 kDa of L-plastin protein. It also reacts with human, mouse and rat. The other species are not tested.

STORAGE

The antibodies are stable for 24 months from date of receipt when stored at -20oC to -70oC. The antibodies can be stored at 2oC-8oC for three month without detectable loss of activity. Avoid repeated freezing-thawing cycles.

APPLICATIONS/SUGGESTED WORKING DILUTIONS*

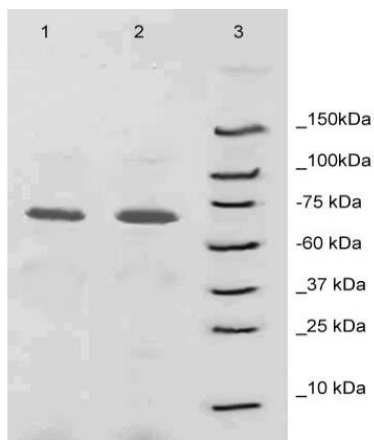
- Western Blot: 0.1-1 µg/ml
- ELISA: 0.01-0.1 µg/ml
- Immunoprecipitation: 2-5 µg/ml
- IHC: 2-10 µg/ml
- Flow cytometry: Not tested
- Molecular Weight: 64.0
- Positive Control: Kidney Tissue
- Cellular Location: Cell Membrane

*Optimal dilutions should be determined by researchers for the specific applications.

FOR RESEARCH USE ONLY.

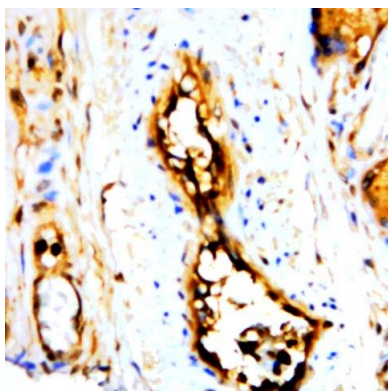
AbboMax, Inc 2528 Qume Drive, Suite 8, San Jose, California 95131, USA
1 408-573-1898 (Tel). 1 408-573-1858 (Fax). www.abbomax.com info@abbomax.com

DATA ATTACHMENTS



WB: HL60 (lane1) and mouse spleen (lane 2) stained by RbxL-Plastin at 1:500 (Lane3: MWV)

Western Blot: The whole lysate derived from HL60 (Lane #1), Spleen (lane #2)Hela (20 ug/lane) immunoblotted by Rabbit anti – L-Plastin antibody (Cat# 600-760) at 1:500. Observed a major immunoreactive band at molecular weight ~64kDa.



Immunohistochemistry: Human Placenta (FFPE) stained with Rabbit anti-L-Plastin antibody (Cat# 600-760) at 1:200 for 10 min @ RT. Staining of formalin-fixed tissue requires boiling tissue sections in 10 mM Citrate Buffer, pH 6.0 for 10 min followed by cooling at RT for 20 min.

REFERENCES

FOR RESEARCH USE ONLY.

AbboMax, Inc 2528 Qume Drive, Suite 8, San Jose, California 95131, USA
1 408-573-1898 (Tel). 1 408-573-1858 (Fax). www.abbomax.com info@abbomax.com