



Rabbit anti PSA Polyclonal Antibody

Alternative Name(s): Prostate specific antigen; PSA; kallikrein-related peptidase 3

Order Information

- **Description:** PSA
- **Catalogue:** 600-700
- **Lot:** See label
- **Size:** 100ug/200ul
- **Host:** Rabbit
- **Clone:** nan
- **Application:** IHC(P), WB
- **Reactivity:** Hu

ANTIGEN PREPARATION

A synthetic peptide corresponding to internal sequence of human PSA protein.

BACKGROUND

Prostate specific antigen (PSA), also called kallikrein-3, is a chymotrypsin-like serine protease exclusively produced by the prostate epithelium, and abundant in seminal fluid. The PSA is an established tumor marker that aids in the diagnosis, staging and follow up of prostate cancer. PSA can be detected in the sera of patients with prostatic carcinoma.

PURIFICATION

The Rabbit IgG is purified by Epitope Affinity Purification

FORMULATION

This affinity purified antibody is supplied in sterile Phosphatebuffered saline (pH7.2) containing antibody stabilizer

SPECIFICITY

This antibody recognizes ~27 kDa of human PSA protein. The other species are not tested.

STORAGE

The antibodies are stable for 24 months from date of receipt when stored at -20oC to -70oC. The antibodies can be stored at 2oC-8oC for three month without detectable loss of activity. Avoid repeated freezing-thawing cycles.

APPLICATIONS/SUGGESTED WORKING DILUTIONS*

- Western Blot: 0.1-1 µg/ml
- ELISA: 0.01-0.1 µg/ml
- Immunoprecipitation: 2-5 µg/ml
- IHC: 2-10 µg/ml
- Flow cytometry: Not tested
- Molecular Weight: 27.0
- Positive Control: Kidney Tissue
- Cellular Location: Cell Membrane

*Optimal dilutions should be determined by researchers for the specific applications.

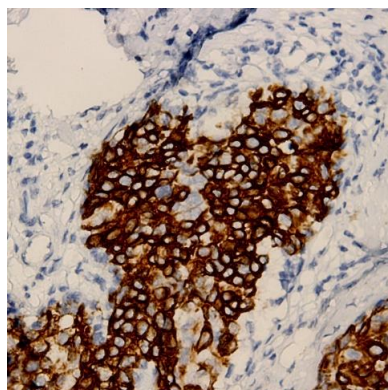
FOR RESEARCH USE ONLY.

AbboMax, Inc 2528 Qume Drive, Suite 8, San Jose, California 95131, USA
1 408-573-1898 (Tel). 1 408-573-1858 (Fax). www.abbomax.com info@abbomax.com

DATA ATTACHMENTS



Western Blot: The whole cell lysates derived from LNCap (lane 1) and HEK293 (lane 2) were immunoblotted by Rabbit anti-PSA (Cat#600-700) at 1:1000. Observed a major immunoreactive band at molecular weight ~27 kDa.



Immunohistochemistry: Human Prostate carcinoma (FFPE) stained with Rabbit anti-PSA (Cat# 600-700) at 1:200 for 10 min @ RT. Staining of formalin-fixed tissue requires boiling tissue sections in 10 mM Citrate Buffer, pH 6.0 for 10 min followed by cooling at RT for 20 min.

REFERENCES

FOR RESEARCH USE ONLY.

AbboMax, Inc 2528 Qume Drive, Suite 8, San Jose, California 95131, USA
1 408-573-1898 (Tel). 1 408-573-1858 (Fax). www.abbomax.com info@abbomax.com