



Rabbit anti MMP-28 Polyclonal Antibody

Alternative Name(s): MM28; MMP25; MMP-25; MMP-28; EPILYSIN

Order Information

- **Description:** MMP-28
- **Catalogue:** 600-690
- **Lot:** See label
- **Size:** 100ug/200ul
- **Host:** Rabbit
- **Clone:** nan
- **Application:** IHC(P), WB
- **Reactivity:** Hu

ANTIGEN PREPARATION

A synthetic peptide corresponding to inter-segment of human MMP28 protein.

BACKGROUND

MMP28 is 45 kDa protein that belongs to the proteins of the matrix metalloproteinase (MMP) family are involved in the breakdown of extracellular matrix for both normal physiological processes, such as embryonic development, reproduction and tissue remodeling, and disease processes, such as asthma and metastasis. MMP28 is a secreted enzyme that degrades casein. It plays a role in tissue homeostasis and in wound repair.

PURIFICATION

The Rabbit IgG is purified by Epitope Affinity Purification

FORMULATION

This affinity purified antibody is supplied in sterile Phosphatebuffered saline (pH7.2) containing antibody stabilizer

SPECIFICITY

This antibody recognizes human protein. The other species are not tested.

STORAGE

The antibodies are stable for 24 months from date of receipt when stored at -20°C to -70°C . The antibodies can be stored at 2°C - 8°C for three month without detectable loss of activity. Avoid repeated freezing-thawing cycles.

APPLICATIONS/SUGGESTED WORKING DILUTIONS*

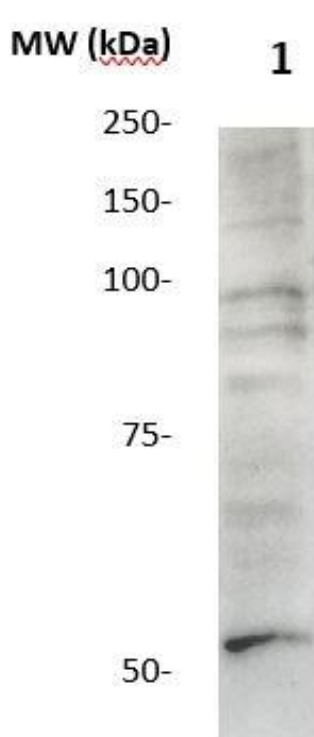
- Western Blot: 0.1-1 $\mu\text{g/ml}$
- ELISA: 0.01-0.1 $\mu\text{g/ml}$
- Immunoprecipitation: 2-5 $\mu\text{g/ml}$
- IHC: 2-10 $\mu\text{g/ml}$
- Flow cytometry: Not tested
- Molecular Weight: 45.0
- Positive Control: Kidney Tissue
- Cellular Location: Cell Membrane

*Optimal dilutions should be determined by researchers for the specific applications.

FOR RESEARCH USE ONLY.

AbboMax, Inc 2528 Qume Drive, Suite 8, San Jose, California 95131, USA
1 408-573-1898 (Tel). 1 408-573-1858 (Fax). www.abbomax.com info@abbomax.com

DATA ATTACHMENTS



Western Blot: The whole lysate derived from MCF7 (20 ug/lane) immunoblotted by Rabbit anti – MMP-28 (Cat# 500-690) at 1:500. Observed a major immunoreactive band at molecular weight ~59kDa.

REFERENCES

FOR RESEARCH USE ONLY.