



## Rabbit anti Legumain Polyclonal Antibody

Alternative Name(s): LGMN; AEP; PRSC1

### Order Information

- **Description:** Legumain
- **Catalogue:** 600-650
- **Lot:** See label
- **Size:** 100ug/200ul
- **Host:** Rabbit
- **Clone:** nan
- **Application:** IHC(P), WB
- **Reactivity:** Hu, Ms, Rt

### **ANTIGEN PREPARATION**

A synthetic peptide corresponding to the internal sequence (a portion from 100aa-190aa) of human Legumain protein. This sequence is identical to mouse, human and rat.

### **BACKGROUND**

Legumain, a 433 amino acid protein with 17 aa signal sequence, is a cysteine protease that has a strict specificity for hydrolysis of asparaginyl bonds. This enzyme may be involved in the processing of bacterial peptides and endogenous proteins for MHC class II presentation in the lysosomal/endosomal systems. Enzyme activation is triggered by acidic pH and appears to be autocatalytic. Protein expression occurs after monocytes differentiate into dendritic cells. Overexpression of this gene may be associated with the majority of solid tumor types. This novel asparaginyl endopeptidase has been observed to be highly expressed in several types of tumors including colorectal cancer.

### **PURIFICATION**

The Rabbit IgG is purified by Epitope Affinity Purification

### **FORMULATION**

This affinity purified antibody is supplied in sterile Phosphatebuffered saline (pH7.2) containing antibody stabilizer

### **SPECIFICITY**

This antibody recognizes ~50 kDa of Legumain protein. It reacts with human, rat and mouse. The other species are not tested.

### **STORAGE**

The antibodies are stable for 24 months from date of receipt when stored at -20oC to -70oC. The antibodies can be stored at 2oC-8oC for three month without detectable loss of activity. Avoid repeated freezing-thawing cycles.

### **APPLICATIONS/SUGGESTED WORKING DILUTIONS\***

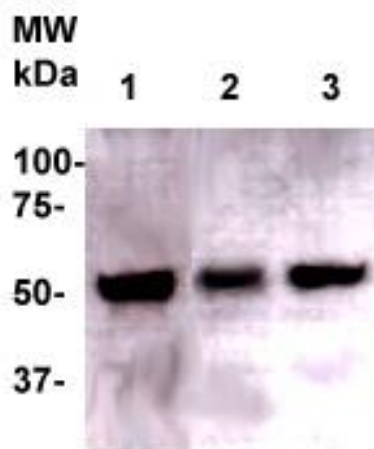
- Western Blot: 0.1-1 µg/ml
- ELISA: 0.01-0.1 µg/ml
- Immunoprecipitation: 2-5 µg/ml
- IHC: 2-10 µg/ml
- Flow cytometry: Not tested
- Molecular Weight: 45.0
- Positive Control: Kidney Tissue
- Cellular Location: Cell Membrane

\*Optimal dilutions should be determined by researchers for the specific applications.

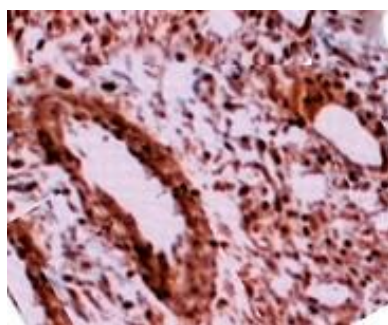
### **FOR RESEARCH USE ONLY.**

AbboMax, Inc 2528 Qume Drive, Suite 8, San Jose, California 95131, USA  
1 408-573-1898 (Tel). 1 408-573-1858 (Fax). [www.abbomax.com](http://www.abbomax.com) [info@abbomax.com](mailto:info@abbomax.com)

## DATA ATTACHMENTS



Western Blot: The cell lysate derived from HT-29 (lane 1), Hela (Lane 2) and mouse kidney (lane 3) were resolved onto 10% SDS-PAGE, transferred onto NC membrane, and immunoprobed by Rabbit anti Legumain antibody (Cat#600-650) at 1:500. An immunoreactive band around ~50 kDa was observed.



Immunohistochemistry: Human ovary carcinoma stained with Rabbit Anti-Legumain (Cat#600-650) 1:200 dilution. Staining of formalin-fixed tissue requires boiling tissue sections in 10 mM Citrate Buffer, pH 6.0 for 10 min followed by cooling at RT for 20 min.

## REFERENCES

### FOR RESEARCH USE ONLY.

AbboMax, Inc 2528 Qume Drive, Suite 8, San Jose, California 95131, USA  
1 408-573-1898 (Tel). 1 408-573-1858 (Fax). [www.abbomax.com](http://www.abbomax.com) [info@abbomax.com](mailto:info@abbomax.com)