



## Rabbit anti Calumenin Polyclonal Antibody

Alternative Name(s): CALU;

### Order Information

- **Description:** Calumenin
- **Catalogue:** 600-640
- **Lot:** See label
- **Size:** 100ug/200ul
- **Host:** Rabbit
- **Clone:** nan
- **Application:** IHC(P), WB
- **Reactivity:** Hu, Ms, Rt

### **ANTIGEN PREPARATION**

A synthetic peptide corresponding to the N-terminus of Calumenin protein. This sequence is identical to rat, mouse and human origins.

### **BACKGROUND**

Calumenin (CALU) is a calcium binding protein localized in the endo/sarcoplasmic reticulum (ER) in mammalian tissues. It is involved ER and Golgi apparatus named CERC which is an acronym for its family members Cab-45, reticulocalbin, Erc-55 and Calumenin. The CALU gene encodes a deduced 315aa protein containing six- EF-hand Ca<sup>2+</sup>-binding protein with one potential N-glycosylation site, and a C-terminal ER retention signal. The human and mouse/rat CALU proteins are 98% identical. Two isoforms exist in cardiac and skeletal muscles, but Calumenin-2 is the main isoforms in skeletal muscle. Increasing in the expression of Calumenin in chemotherapeutic drug resistance in neoplastic cells is observed. It is also involved in the pathophysiology of thrombosis or in wound healing. CALU mRNA is ubiquitously expressed in human tissues and maps to 7q32.

### **PURIFICATION**

The Rabbit IgG is purified by Epitope Affinity Purification

### **FORMULATION**

This affinity purified antibody is supplied in sterile Phosphatebuffered saline (pH7.2) containing antibody stabilizer

### **SPECIFICITY**

This antibody recognizes ~48 kDa of Calumenin Protein. It cross reacts with human, mouse and rat. The other species are not tested.

### **STORAGE**

The antibodies are stable for 24 months from date of receipt when stored at -20oC to -70oC. The antibodies can be stored at 2oC-8oC for three month without detectable loss of activity. Avoid repeated freezing-thawing cycles.

### **APPLICATIONS/SUGGESTED WORKING DILUTIONS\***

- Western Blot: 0.1-1 µg/ml
- ELISA: 0.01-0.1 µg/ml
- Immunoprecipitation: 2-5 µg/ml
- IHC: 2-10 µg/ml
- Flow cytometry: Not tested
- Molecular Weight: 37.0
- Positive Control: Kidney Tissue
- Cellular Location: Cell Membrane

\*Optimal dilutions should be determined by researchers for the specific applications.

### **FOR RESEARCH USE ONLY.**

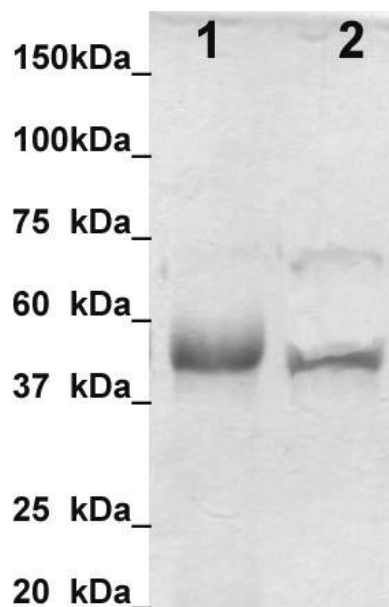
AbboMax, Inc 2528 Qume Drive, Suite 8, San Jose, California 95131, USA  
1 408-573-1898 (Tel). 1 408-573-1858 (Fax). [www.abbomax.com](http://www.abbomax.com) [info@abbomax.com](mailto:info@abbomax.com)



**FOR RESEARCH USE ONLY.**

AbboMax, Inc 2528 Qume Drive, Suite 8, San Jose, California 95131, USA  
1 408-573-1898 (Tel). 1 408-573-1858 (Fax). [www.abbomax.com](http://www.abbomax.com) [info@abbomax.com](mailto:info@abbomax.com)

## DATA ATTACHMENTS



Western Blot: Tissue lysate from Mouse cardiac muscle (lane 1) and mouse skeletal muscle (lane 2) were resolved onto 12% SDS-PAGE and transferred onto NC Membrane, then immune-probed by Anti-Calumenin antibody, (Cat# 600-640) at 1:500. Observed a major immunoreactive band at molecular weight ~37 kDa.

## REFERENCES

### FOR RESEARCH USE ONLY.

AbboMax, Inc 2528 Qume Drive, Suite 8, San Jose, California 95131, USA  
1 408-573-1898 (Tel). 1 408-573-1858 (Fax). [www.abbomax.com](http://www.abbomax.com) [info@abbomax.com](mailto:info@abbomax.com)