



Rabbit anti Osteopontin(SPP1) Polyclonal Antibody

Alternative Name(s): SPP1; Secreted phosphoprotein

Order Information

- **Description:** Osteopontin(SPP1)
- **Catalogue:** 600-600
- **Lot:** See label
- **Size:** 100ug/200ul
- **Host:** Rabbit
- **Clone:** nan
- **Application:** IHC(P), WB
- **Reactivity:** Rt, Ms, Hu

ANTIGEN PREPARATION

A synthetic peptide corresponding to the internal portion of Osteopontin protein sequence. This sequence is identical to human, rat and mouse origins.

BACKGROUND

Osteopontin (OPN or Early T-Lymphocyte Activation-1: Eta-1), also referred to as transformation-associated secreted phosphoprotein, bone sialoprotein I, and minopotin, is a highly phosphorylated and glycosylated phosphoprotein that is expressed in many tissues. It is acidic, calcium-binding, cell surface-binding sequences (RGD)-containing protein was originally isolated from bone matrix. Osteopontin has been found in kidney, placenta, blood vessels. It is over-expressed in a variety of cancers, including lung, breast, colorectal, stomach, ovarian, melanoma and mesothelioma.

PURIFICATION

The Rabbit IgG is purified by Epitope Affinity Purification

FORMULATION

This affinity purified antibody is supplied in sterile Phosphatebuffered saline (pH7.2) containing antibody stabilizer

SPECIFICITY

This antibody recognizes ~34 kDa of Osteopontin protein. It reacts with human, mouse and rat. The other species are not tested.

STORAGE

The antibodies are stable for 24 months from date of receipt when stored at -20oC to -70oC. The antibodies can be stored at 2oC-8oC for three month without detectable loss of activity. Avoid repeated freezing-thawing cycles.

APPLICATIONS/SUGGESTED WORKING DILUTIONS*

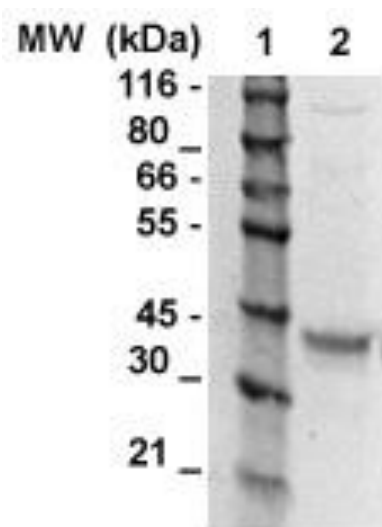
- Western Blot: 0.1-1 µg/ml
- ELISA: 0.01-0.1 µg/ml
- Immunoprecipitation: 2-5 µg/ml
- IHC: 2-10 µg/ml
- Flow cytometry: Not tested
- Molecular Weight: 34.0
- Positive Control: Kidney Tissue
- Cellular Location: Cell Membrane

*Optimal dilutions should be determined by researchers for the specific applications.

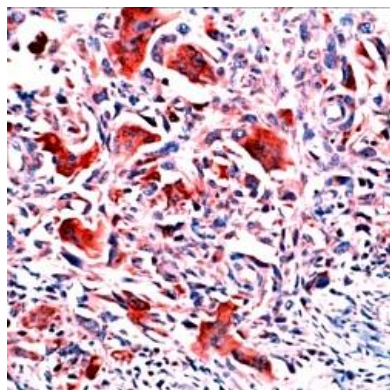
FOR RESEARCH USE ONLY.

AbboMax, Inc 2528 Qume Drive, Suite 8, San Jose, California 95131, USA
1 408-573-1898 (Tel). 1 408-573-1858 (Fax). www.abbomax.com info@abbomax.com

DATA ATTACHMENTS



Western Blot: The Cell lysate derived from HT-29 (Lane 2) were resolved onto 10% SDS-PAGE, transferred onto NC membrane, and immuno-blotted by Rabbit anti Osteopontin (Cat#600-600) at 1:500. An immunoreactive band around ~34 kDa was observed.



Immunohistochemistry: Human breast cancer tissue (FFPE) stained with Rabbit anti Osteopontin/SPP1 antibody (Cat# 600-600) at 1:100 for 10 min @ RT. Staining of formalin-fixed tissue requires boiling tissue sections in 10 mM Citrate Buffer, pH 6.0 for 10 min followed by cooling at RT for 20 min.

REFERENCES

FOR RESEARCH USE ONLY.

AbboMax, Inc 2528 Qume Drive, Suite 8, San Jose, California 95131, USA
1 408-573-1898 (Tel). 1 408-573-1858 (Fax). www.abbomax.com info@abbomax.com