



Rabbit anti SOCS1 Polyclonal Antibody

Alternative Name(s): suppressor of cytokine signaling 1

Order Information

- **Description:** SOCS1
- **Catalogue:** 600-520
- **Lot:** See label
- **Size:** 100ug/200ul
- **Host:** Rabbit
- **Clone:** nan
- **Application:** IHC(P), WB
- **Reactivity:** Hu, Ms, Rt

ANTIGEN PREPARATION

A synthetic peptide corresponding to C-terminus of SOCS-1 protein from human and mouse origins.

BACKGROUND

Cytokines induce a variety of biological responses by binding to specific cell surface receptors and activating cytoplasmic signal transduction pathways which are suppressed by other transcriptional factors. Proteins that mediate these signals from the cell surface to the nucleus include JAKs and STATs, while SOCS (Suppressor of cytokine signaling) proteins inhibit those signaling. The SOCS family comprises at least 8 members, SOCS1 to SOCS7 and CIS (cytokine inducible SH2 containing protein). Structurally, the SOCS proteins are composed of an N terminal region of variable length and amino acid composition, a central SH2 domain, and a previously unrecognized C terminal motif named the SOCS box. SOCS 1 inhibition of signal transduction appears to occur by binding to and inhibiting the catalytic activity of members of JAK family of cytoplasmic kinases (direct JAK2 kinase inhibition). SOCS1 is an important negative regulator of JAK-STAT signal pathway.

PURIFICATION

The Rabbit IgG is purified by Epitope Affinity Purification

FORMULATION

This affinity purified antibody is supplied in sterile Phosphatebuffered saline (pH7.2) containing antibody stabilizer

SPECIFICITY

This antibody recognizes ~24 kDa of SOCS-1 protein from human and mouse origins. The other species are not tested.

STORAGE

The antibodies are stable for 24 months from date of receipt when stored at -20oC to -70oC. The antibodies can be stored at 2oC-8oC for three month without detectable loss of activity. Avoid repeated freezing-thawing cycles.

APPLICATIONS/SUGGESTED WORKING DILUTIONS*

- Western Blot: 0.1-1 µg/ml
- ELISA: 0.01-0.1 µg/ml
- Immunoprecipitation: 2-5 µg/ml
- IHC: 2-10 µg/ml
- Flow cytometry: Not tested
- Molecular Weight: 24.0
- Positive Control: Kidney Tissue
- Cellular Location: Cell Membrane

*Optimal dilutions should be determined by researchers for the specific applications.

FOR RESEARCH USE ONLY.

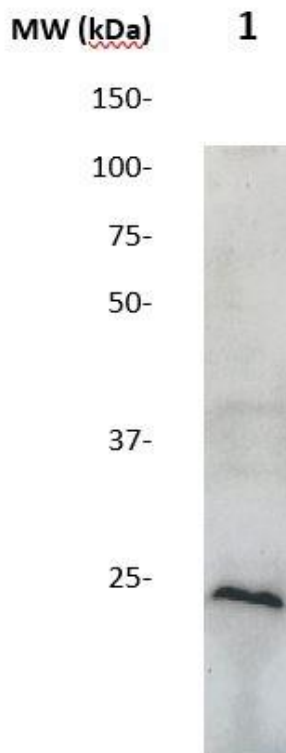
AbboMax, Inc 2528 Qume Drive, Suite 8, San Jose, California 95131, USA
1 408-573-1898 (Tel). 1 408-573-1858 (Fax). www.abbomax.com info@abbomax.com



FOR RESEARCH USE ONLY.

AbboMax, Inc 2528 Qume Drive, Suite 8, San Jose, California 95131, USA
1 408-573-1898 (Tel). 1 408-573-1858 (Fax). www.abbomax.com info@abbomax.com

DATA ATTACHMENTS



Western Blot: The tissue lysate derived from mouse liver (20 ug/lane) was immunoprobed by Rabbit anti-SCOS-1 (Cat#600-520) at 1:500. An immunoreactive band is observed around ~24kDa.

REFERENCES

FOR RESEARCH USE ONLY.

AbboMax, Inc 2528 Qume Drive, Suite 8, San Jose, California 95131, USA
1 408-573-1898 (Tel). 1 408-573-1858 (Fax). www.abbomax.com info@abbomax.com