



Rabbit anti c-Myc Polyclonal Antibody

Alternative Name(s): Myc; v-myc myelocytomatosis viral oncogene homolog

Order Information

- **Description:** c-Myc
- **Catalogue:** 600-510
- **Lot:** See label
- **Size:** 100ug/200ul
- **Host:** Rabbit
- **Clone:** nan
- **Application:** IHC(P), WB
- **Reactivity:** Hu, Ms, Rt

ANTIGEN PREPARATION

A synthetic peptide derived from internal segment of human c-Myc

BACKGROUND

The MYC family of proto-oncogenes consists of three members: c-myc (MYC), l-myc (MYCL), and n-myc (MYCN). C-Myc is a multifunctional, nuclear phosphoprotein that plays a role in cell cycle progression, apoptosis and cellular transformation. It functions as a transcription factor that regulates transcription of specific target genes. Myc genes are essential for normal development as well as for homeostasis of individual tissues, including intestine, skin and the hematopoietic compartment. Expression of MYC proteins is enhanced and deregulated in many human tumors. Mutations, overexpression, rearrangement and translocation of Myc gene have been associated with a variety of hematopoietic tumors, leukemias and lymphomas, including Burkitt lymphoma, in human. There are different causes for enhanced MYC expression in individual tumors, which include alterations in the MYC genes themselves, or amplifications of MYC family genes. Deregulated expression of MYC contributes to tumorigenesis and is required to maintain tumor growth.

PURIFICATION

The Rabbit IgG is purified by Epitope Affinity Purification

FORMULATION

This affinity purified antibody is supplied in sterile Phosphatebuffered saline (pH7.2) containing antibody stabilizer

SPECIFICITY

This antibody recognizes c-Myc protein. It reacts to human, mice and rat.

STORAGE

The antibodies are stable for 24 months from date of receipt when stored at -20oC to -70oC. The antibodies can be stored at 2oC-8oC for three month without detectable loss of activity. Avoid repeated freezing-thawing cycles.

APPLICATIONS/SUGGESTED WORKING DILUTIONS*

- Western Blot: 0.1-1 µg/ml
- ELISA: 0.01-0.1 µg/ml
- Immunoprecipitation: 2-5 µg/ml
- IHC: 2-10 µg/ml
- Flow cytometry: Not tested
- Molecular Weight: 49.0
- Positive Control: Kidney Tissue
- Cellular Location: Cell Membrane

*Optimal dilutions should be determined by researchers for the specific applications.

FOR RESEARCH USE ONLY.

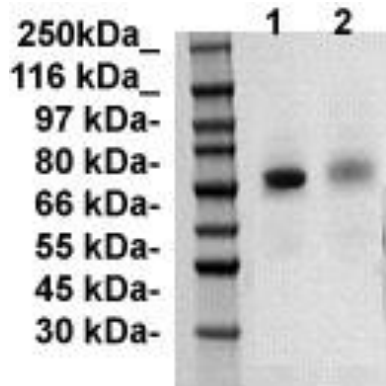
AbboMax, Inc 2528 Qume Drive, Suite 8, San Jose, California 95131, USA
1 408-573-1898 (Tel). 1 408-573-1858 (Fax). www.abbomax.com info@abbomax.com



FOR RESEARCH USE ONLY.

AbboMax, Inc 2528 Qume Drive, Suite 8, San Jose, California 95131, USA
1 408-573-1898 (Tel). 1 408-573-1858 (Fax). www.abbomax.com info@abbomax.com

DATA ATTACHMENTS



Western Blot: The whole lysate derived from HeLa (Lane 1: 20 ug/lane, Lane 2: 10 ug/lane) immunoblotted by Rabbit anti -c-Myc (Cat# 600-510) at 1:500. Observed a major immunoreactive band at molecular weight ~60 kDa.

REFERENCES

FOR RESEARCH USE ONLY.