



## Rabbit anti His-Tag Polyclonal Antibody

Alternative Name(s): HHHHHH

### Order Information

- **Description:** His-Tag
- **Catalogue:** 600-500
- **Lot:** See label
- **Size:** 100ug/200ul
- **Host:** Rabbit
- **Clone:** nan
- **Application:** WB, ELISA
- **Reactivity:** Tag antibody

### **ANTIGEN PREPARATION**

A synthetic peptide of HHHHHH conjugated to a carrier protein.

### **BACKGROUND**

Many oligo peptides or tag proteins are widely used as a tag to monitor the protein expression, such as FLAG, c-Myc, E-tag, His-tag, GFP, GST, and etc. These tag antibodies provide tools to localize gene products in a variety of cell types to study the topology of proteins, and protein complexes, and to identify associated proteins. In addition, this antibody allows characterizing of newly identified, lowing abundance or poorly immunogenic proteins when protein specific antibodies are not available. The His tag antibody is generated according to the 6 amino acid epitope tag (HHHHHH), and it can be used to detect the His tagged fusion proteins.

### **PURIFICATION**

The Rabbit IgG is purified by Epitope Affinity Purification

### **FORMULATION**

This affinity purified antibody is supplied in sterile Phosphatebuffered saline (pH7.2) containing antibody stabilizer

### **SPECIFICITY**

This antibody recognizes His tagged fusion proteins. It is a tag antibody.

### **STORAGE**

The antibodies are stable for 24 months from date of receipt when stored at  $-20^{\circ}\text{C}$  to  $-70^{\circ}\text{C}$ . The antibodies can be stored at  $2^{\circ}\text{C}$ - $8^{\circ}\text{C}$  for three month without detectable loss of activity. Avoid repeated freezing-thawing cycles.

### **APPLICATIONS/SUGGESTED WORKING DILUTIONS\***

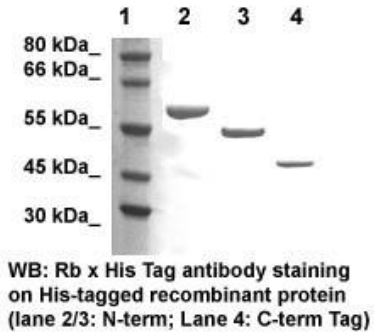
- Western Blot: 0.1-1  $\mu\text{g}/\text{ml}$
- ELISA: 0.01-0.1  $\mu\text{g}/\text{ml}$
- Immunoprecipitation: 2-5  $\mu\text{g}/\text{ml}$
- IHC: 2-10  $\mu\text{g}/\text{ml}$
- Flow cytometry: Not tested
- Molecular Weight: 0.8
- Positive Control: Kidney Tissue
- Cellular Location: Cell Membrane

\*Optimal dilutions should be determined by researchers for the specific applications.

### **FOR RESEARCH USE ONLY.**

AbboMax, Inc 2528 Qume Drive, Suite 8, San Jose, California 95131, USA  
1 408-573-1898 (Tel). 1 408-573-1858 (Fax). [www.abbomax.com](http://www.abbomax.com) [info@abbomax.com](mailto:info@abbomax.com)

**DATA ATTACHMENTS**



Western Blot: The His-tagged recombinant protein (5 ug/lane) immunoblotted by Rabbit anti – His-Tag antibody (Cat# 600-500) at 1:500.

**REFERENCES**

**FOR RESEARCH USE ONLY.**