



Rabbit anti SAPOSIN(PSAP) Polyclonal Antibody

Alternative Name(s): Prosaposin; PSAP

Order Information

- **Description:** SAPOSIN(PSAP)
- **Catalogue:** 600-470
- **Lot:** See label
- **Size:** 100ug/200ul
- **Host:** Rabbit
- **Clone:** nan
- **Application:** WB, ELISA
- **Reactivity:** Hu

ANTIGEN PREPARATION

A synthetic peptide corresponding to internal sequence (within 300-360aa) of human Saposin.

BACKGROUND

The Saposin family includes four structurally related proteins, saposin A, B, C, and D which are ~80 aa small acidic activator proteins with specificities for glycosphingolipid (GSL) hydrolases. They are derived from a single precursor, prosaposin. In both humans and mice, prosaposin/saposin deficiencies lead to severe neurological deficits. Saposins are processed from prosaposin in the late endosome and lysosome, and their stability is maintained by three disulfide bridges. The post-modified prosaposin is an ~70 kDa form which subsequently undergoes partial proteolysis to produce saposin A, B, C, and D, each proteins are between 12-14 kDa in mass.

PURIFICATION

The Rabbit IgG is purified by Epitope Affinity Purification

FORMULATION

This affinity purified antibody is supplied in sterile Phosphatebuffered saline (pH7.2) containing antibody stabilizer

SPECIFICITY

This antibody recognizes ~70 kDa of human Prosaposin protein. It also reacts with mouse and rat. The other species are not tested.

STORAGE

The antibodies are stable for 24 months from date of receipt when stored at -20oC to -70oC. The antibodies can be stored at 2oC-8oC for three month without detectable loss of activity. Avoid repeated freezing-thawing cycles.

APPLICATIONS/SUGGESTED WORKING DILUTIONS*

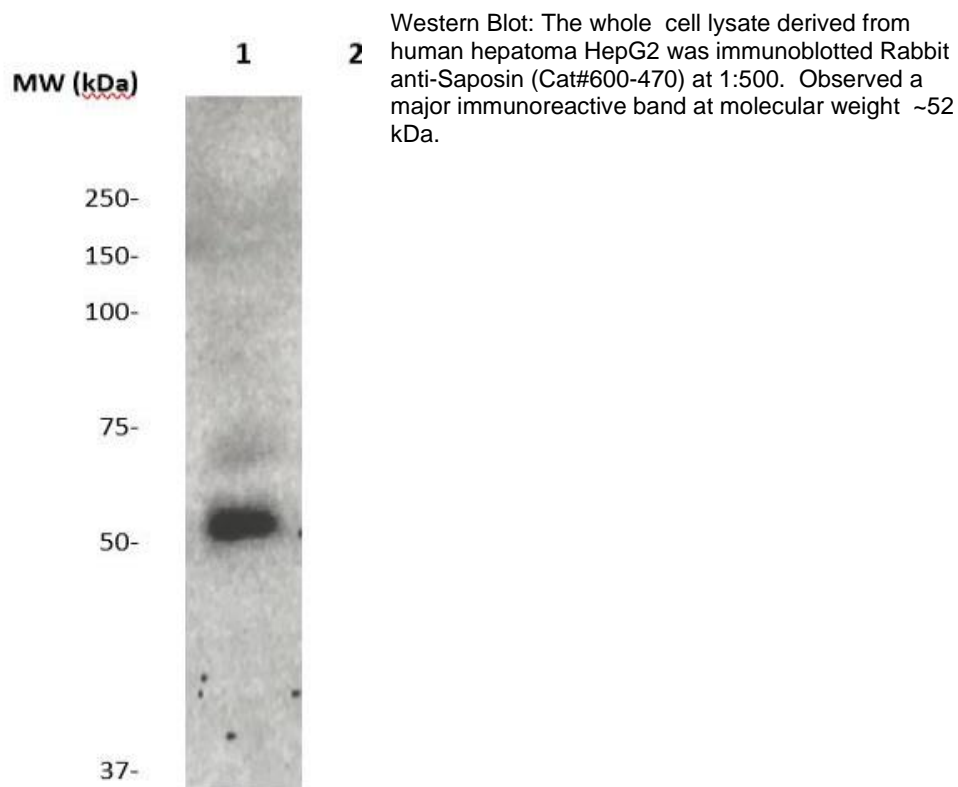
- Western Blot: 0.1-1 µg/ml
- ELISA: 0.01-0.1 µg/ml
- Immunoprecipitation: 2-5 µg/ml
- IHC: 2-10 µg/ml
- Flow cytometry: Not tested
- Molecular Weight: 52.0
- Positive Control: Kidney Tissue
- Cellular Location: Cell Membrane

*Optimal dilutions should be determined by researchers for the specific applications.

FOR RESEARCH USE ONLY.

AbboMax, Inc 2528 Qume Drive, Suite 8, San Jose, California 95131, USA
1 408-573-1898 (Tel). 1 408-573-1858 (Fax). www.abbomax.com info@abbomax.com

DATA ATTACHMENTS



REFERENCES

FOR RESEARCH USE ONLY.

AbboMax, Inc 2528 Qume Drive, Suite 8, San Jose, California 95131, USA
1 408-573-1898 (Tel). 1 408-573-1858 (Fax). www.abbomax.com info@abbomax.com