



## Rabbit anti TFAA2 Polyclonal Antibody

**Alternative Name(s):** family with sequence similarity 19 (chemokine (C-C motif)-like), member A2; FATA-2; FAM19A2

### Order Information

- **Description:** TFAA2
- **Catalogue:** 600-460
- **Lot:** See label
- **Size:** 100ug/200ul
- **Host:** Rabbit
- **Clone:** nan
- **Application:** IHC, WB, ELISA
- **Reactivity:** Hu, Ms, Rt

### ANTIGEN PREPARATION

A synthetic peptide corresponding to the N-terminus of TFAA2 protein. This sequence is identical among human, mouse.

### BACKGROUND

The TFAA2, also known as FAM19A2, is a secreted 12kDa protein. It belongs to the FAM19/TFAA family of chemokinelike. The family is composed of five highly homologous genes referred to as TFAA-1 to -5. The TFAA genes encode proteins of approximately 100 amino acids that contain conserved cysteine residues at fixed positions. TFAA-1 to -4 are more closely related to each other than to TFAA-5, in which a conserved motif including CC in TFAA-1 to -4 is not present. In H. sapiens, TFAA-3 has two isoforms formed by alternative splicing. TFAAs are highly expressed in central nervous system (CNS), and less extent in other tissues such as colon, heart, lung, spleen, kidney, and thymus. TFAA2 expression is highest in the occipital and frontal cortex. TFAAs may modulate immune responses in the CNS by functioning as brain-specific chemokines, and may act with other chemokines to optimize the recruitment and activity of immune cells in the CNS. It may act as neurokinins that regulate immune nervous cells. It may also control axonal sprouting following brain injury.

### PURIFICATION

The Rabbit IgG is purified by Epitope Affinity Purification

### FORMULATION

This affinity purified antibody is supplied in sterile Phosphatebuffered saline (pH7.2) containing antibody stabilizer

### SPECIFICITY

This antibody recognizes TFAA2 protein. It reacts to human, mice and rat.

### STORAGE

The antibodies are stable for 24 months from date of receipt when stored at -20°C to -70°C. The antibodies can be stored at 2°C-8°C for three months without detectable loss of activity. Avoid repeated freezing-thawing cycles.

### APPLICATIONS/SUGGESTED WORKING DILUTIONS\*

- Western Blot: 0.1-1 µg/ml
- ELISA: 0.01-0.1 µg/ml
- Immunoprecipitation: 2-5 µg/ml
- IHC: 2-10 µg/ml
- Flow cytometry: Not tested
- Molecular Weight: 12.0
- Positive Control: Kidney Tissue
- Cellular Location: Cell Membrane

### FOR RESEARCH USE ONLY.

AbboMax, Inc 2528 Qume Drive, Suite 8, San Jose, California 95131, USA  
1 408-573-1898 (Tel). 1 408-573-1858 (Fax). [www.abbomax.com](http://www.abbomax.com) [info@abbomax.com](mailto:info@abbomax.com)

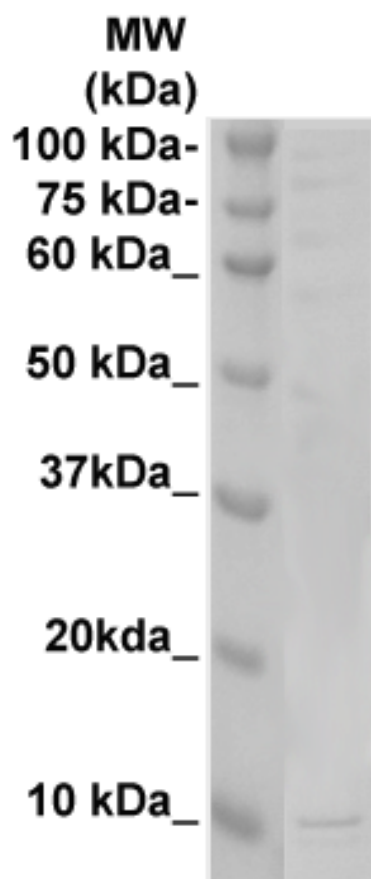


\*Optimal dilutions should be determined by researchers for the specific applications.

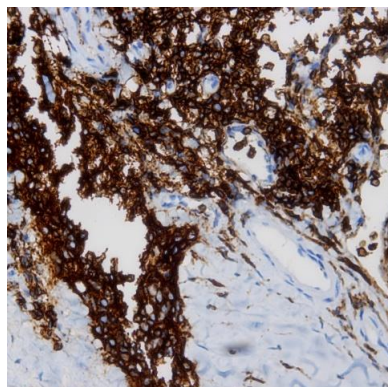
**FOR RESEARCH USE ONLY.**

AbboMax, Inc 2528 Qume Drive, Suite 8, San Jose, California 95131, USA  
1 408-573-1898 (Tel). 1 408-573-1858 (Fax). [www.abbomax.com](http://www.abbomax.com) [info@abbomax.com](mailto:info@abbomax.com)

## DATA ATTACHMENTS



Western Blot: The whole cell lysate derived from mouse brain tissue was immunoblotted Rabbit anti-TAFA2 (Cat#600-460) at 1:500. An immunoreactive band around 12 kDa was observed.



Immunohistochemistry: Human tonsil tissue (FFPE) was immune-stained with Anti-TAFA2 antibody, (Cat# 600-460) at 1:100 for 10 min @ RT. Staining of formalin-fixed tissue requires boiling tissue sections in 10 mM Citrate Buffer, pH 6.0 for 10 min followed by cooling at RT for 20 min.

## REFERENCES

### FOR RESEARCH USE ONLY.

AbboMax, Inc 2528 Qume Drive, Suite 8, San Jose, California 95131, USA  
1 408-573-1898 (Tel). 1 408-573-1858 (Fax). [www.abbomax.com](http://www.abbomax.com) [info@abbomax.com](mailto:info@abbomax.com)