



Rabbit anti Meteorin(CT) Polyclonal Antibody

Alternative Name(s): METRN

Order Information

- **Description:** Meteorin(CT)
- **Catalogue:** 600-450
- **Lot:** See label
- **Size:** 100ug/200ul
- **Host:** Rabbit
- **Clone:** nan
- **Application:** IHC, WB, ELISA
- **Reactivity:** Hu, Ms, Rt

ANTIGEN PREPARATION

A synthetic peptide corresponding to the C-terminus of Meteorin protein. This sequence is identical among human, rat and mouse.

BACKGROUND

The Meteorin, a secreted protein, is expressed in undifferentiated neural progenitors and in astrocyte lineage, including radial glia, or glial cells which are major components of the nervous system. Meteorin selectively promoted astrocyte formation from mouse cerebrocortical neurospheres in differentiation culture, whereas it induced cerebellar astrocytes to become radial glia. Meteorin also induced axonal extension in small and intermediate neurons of sensory ganglia by activating nearby satellite glia. Meteorin plays important roles in both glial cell differentiation and axonal network formation during neurogenesis.

PURIFICATION

The Rabbit IgG is purified by Epitope Affinity Purification

FORMULATION

This affinity purified antibody is supplied in sterile Phosphatebuffered saline (pH7.2) containing antibody stabilizer

SPECIFICITY

This antibody recognizes Meteorin protein. It reacts to human, mice and rat.

STORAGE

The antibodies are stable for 24 months from date of receipt when stored at -20oC to -70oC. The antibodies can be stored at 2oC-8oC for three month without detectable loss of activity. Avoid repeated freezing-thawing cycles.

APPLICATIONS/SUGGESTED WORKING DILUTIONS*

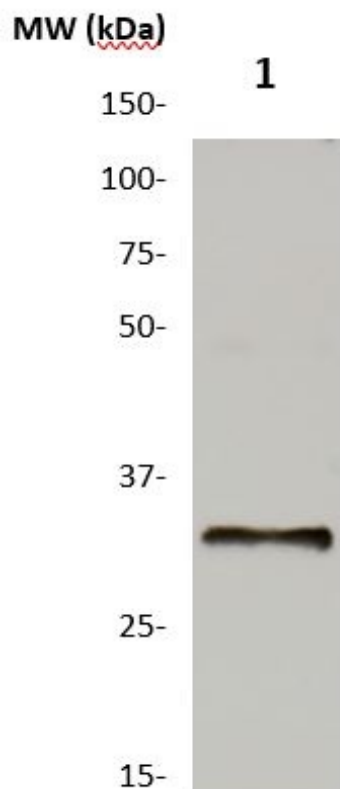
- Western Blot: 0.1-1 µg/ml
- ELISA: 0.01-0.1 µg/ml
- Immunoprecipitation: 2-5 µg/ml
- IHC: 2-10 µg/ml
- Flow cytometry: Not tested
- Molecular Weight: 30.0
- Positive Control: Kidney Tissue
- Cellular Location: Cell Membrane

*Optimal dilutions should be determined by researchers for the specific applications.

FOR RESEARCH USE ONLY.

AbboMax, Inc 2528 Qume Drive, Suite 8, San Jose, California 95131, USA
1 408-573-1898 (Tel). 1 408-573-1858 (Fax). www.abbomax.com info@abbomax.com

DATA ATTACHMENTS



Western Blot: The whole cell lysate derived from mouse brain tissue was immunoblotted Rabbit anti-METRN (Cat#600-450) at 1:500. An immunoreactive band around 30 kDa was observed.

REFERENCES

FOR RESEARCH USE ONLY.

AbboMax, Inc 2528 Qume Drive, Suite 8, San Jose, California 95131, USA
1 408-573-1898 (Tel). 1 408-573-1858 (Fax). www.abbomax.com info@abbomax.com