



## Rabbit anti E-Tag Polyclonal Antibody

Alternative Name(s): GAPVPRPDPLEPR

### Order Information

- **Description:** E-Tag
- **Catalogue:** 600-420
- **Lot:** See label
- **Size:** 100ug/200ul
- **Host:** Rabbit
- **Clone:** nan
- **Application:** WB, ELISA, IP
- **Reactivity:** nan

### **ANTIGEN PREPARATION**

A synthetic peptide of GAPVPYPDPLEPR conjugated to a carrier protein.

### **BACKGROUND**

Many oligo peptides or tag proteins are widely used as a tag to monitor the protein expression, such as c-Myc, E-tag, His-tag, GFP, GST, and etc. This C-Myc tag antibody can detect the protein expression of the c-Myc tag fused proteins. It provides a tool to localize gene products in a variety of cell types to study the topology of proteins, and protein complexes, and to identify associated proteins. In addition, this antibody allows characterizing of newly identified, lowing abundance or poorly immunogenic proteins when protein specific antibodies are not available.

### **PURIFICATION**

The Rabbit IgG is purified by Epitope Affinity Purification

### **FORMULATION**

This affinity purified antibody is supplied in sterile Phosphatebuffered saline (pH7.2) containing antibody stabilizer

### **SPECIFICITY**

This antibody recognizes E-tagged fusion proteins. It is a tag antibody.

### **STORAGE**

The antibodies are stable for 24 months from date of receipt when stored at  $-20^{\circ}\text{C}$  to  $-70^{\circ}\text{C}$ . The antibodies can be stored at  $2^{\circ}\text{C}$ - $8^{\circ}\text{C}$  for three month without detectable loss of activity. Avoid repeated freezing-thawing cycles.

### **APPLICATIONS/SUGGESTED WORKING DILUTIONS\***

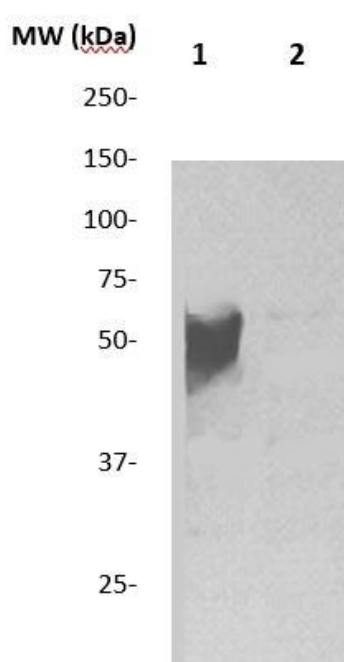
- Western Blot: 0.1-1  $\mu\text{g/ml}$
- ELISA: 0.01-0.1  $\mu\text{g/ml}$
- Immunoprecipitation: 2-5  $\mu\text{g/ml}$
- IHC: 2-10  $\mu\text{g/ml}$
- Flow cytometry: Not tested
- Molecular Weight: nan
- Positive Control: Kidney Tissue
- Cellular Location: Cell Membrane

\*Optimal dilutions should be determined by researchers for the specific applications.

### **FOR RESEARCH USE ONLY.**

AbboMax, Inc 2528 Qume Drive, Suite 8, San Jose, California 95131, USA  
1 408-573-1898 (Tel). 1 408-573-1858 (Fax). [www.abbomax.com](http://www.abbomax.com) [info@abbomax.com](mailto:info@abbomax.com)

**DATA ATTACHMENTS**



Western Blot: The whole cell lysate of 3T3 with over-expressed E-Tag fused recombinant protein was resolved onto 10% SDS-PAGE, then transferred onto NC membrane. Followed by an immune-blotting with Rabbit anti- E-Tag (Cat#600-420) at 1:1000. Lane 2 was a negative control.

**REFERENCES**

**FOR RESEARCH USE ONLY.**