



Rabbit anti JAK1 Polyclonal Antibody

Alternative Name(s): Janus kinase 1

Order Information

- **Description:** JAK1
- **Catalogue:** 600-350
- **Lot:** See label
- **Size:** 100ug/200ul
- **Host:** Rabbit
- **Clone:** nan
- **Application:** WB
- **Reactivity:** Hu, Ms, Rt

ANTIGEN PREPARATION

A synthetic peptide derived from the adjacent to C-terminus of JAK1 protein. This sequence is identical in JAK1 from human, rat and mouse origins.

BACKGROUND

The Janus tyrosine kinase family consists of four members, JAK1, JAK2, JAK3 and Tyk2 ranging from 120-140 kDa. Upon the cytokine ligand binding to its receptors, the dimerization of the receptors occurs followed by phosphorylation of the receptors. Jak1 plays an essential and nonredundant role in promoting biologic responses induced by a select subset of cytokine receptors. Appropriate activation of JAK1/STAT3 signaling is necessary for cell proliferation, survival, and differentiation, but persistent STAT3 activation may result in disease. JAK1/STAT3 pathway is one of the recognized oncogenic signaling pathways that frequently overactivated in a variety of human tumors. Somatic mutations in JAK1 gene occur in individuals with acute lymphoblastic leukemia (ALL). STAT3 and both JAK1 and 2 are involved in human colorectal cancer cell growth, survival, invasion, and migration through regulation of gene expression.

PURIFICATION

The Rabbit IgG is purified by Epitope Affinity Purification

FORMULATION

This affinity purified antibody is supplied in sterile Phosphatebuffered saline (pH7.2) containing antibody stabilizer

SPECIFICITY

This antibody recognizes JAK1. It does not cross-react with JAK2 or JAK3.

STORAGE

The antibodies are stable for 24 months from date of receipt when stored at -20oC to -70oC. The antibodies can be stored at 2oC-8oC for three month without detectable loss of activity. Avoid repeated freezing-thawing cycles.

APPLICATIONS/SUGGESTED WORKING DILUTIONS*

- Western Blot: 0.1-1 µg/ml
- ELISA: 0.01-0.1 µg/ml
- Immunoprecipitation: 2-5 µg/ml
- IHC: 2-10 µg/ml
- Flow cytometry: Not tested
- Molecular Weight: 130.0
- Positive Control: Kidney Tissue
- Cellular Location: Cell Membrane

*Optimal dilutions should be determined by researchers for the specific applications.

FOR RESEARCH USE ONLY.

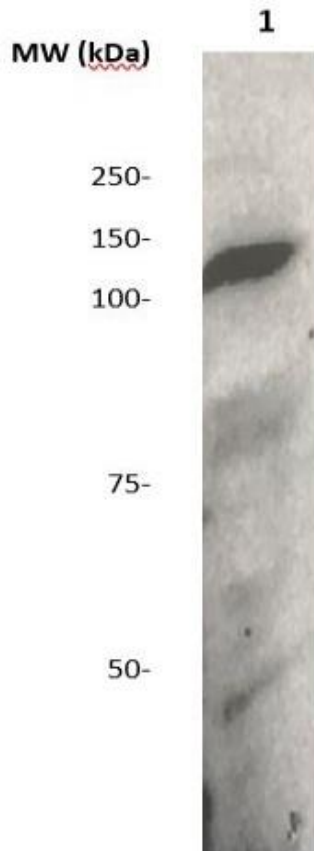
AbboMax, Inc 2528 Qume Drive, Suite 8, San Jose, California 95131, USA
1 408-573-1898 (Tel). 1 408-573-1858 (Fax). www.abbomax.com info@abbomax.com



FOR RESEARCH USE ONLY.

AbboMax, Inc 2528 Qume Drive, Suite 8, San Jose, California 95131, USA
1 408-573-1898 (Tel). 1 408-573-1858 (Fax). www.abbomax.com info@abbomax.com

DATA ATTACHMENTS



Western Blot: The cell lysate (10 ug/lane) derived from mouse liver was immunoblotted by Rabbit anti JAK1 (Cat#600-350) at 1:500. An immunoreactive band is observed around ~130kDa.

REFERENCES

FOR RESEARCH USE ONLY.