



Rabbit anti CREB(pS133) Polyclonal Antibody

Alternative Name(s): cAMP responsive element binding protein

Order Information

- **Description:** CREB(pS133)
- **Catalogue:** 600-280
- **Lot:** See label
- **Size:** 100ug/200ul
- **Host:** Rabbit
- **Clone:** nan
- **Application:** IHC(P), WB
- **Reactivity:** Hu, Rt

ANTIGEN PREPARATION

A synthetic peptide corresponding to the epitope of RPSYR with a single phosphorylation site Ser133.

BACKGROUND

CREB is a bZIP transcription factor that binds the cAMP response element (CRE) and activates target genes. It is involved in many extracellular signals resulting in regulation of a variety of cellular responses. Phosphorylation of CREB at Ser133 by various kinases, such as PKA, PKC, CaM kinase II and IV, is necessary for CREB signaling.

PURIFICATION

The Rabbit IgG is purified by site-modified Epitope Affinity Purification.

FORMULATION

This affinity purified antibody is supplied in sterile Tris-buffered saline (pH7.2) containing antibody stabilizer

SPECIFICITY

This antibody only recognizes ~40 kDa of human CREB protein with phosphorylation site serine 133. It also reacts with rat CREB protein. The other species are not tested.

STORAGE

The antibodies are stable for 24 months from date of receipt when stored at -20oC to -70oC. The antibodies can be stored at 2oC-8oC for three month without detectable loss of activity. Avoid repeated freezing-thawing cycles.

APPLICATIONS/SUGGESTED WORKING DILUTIONS*

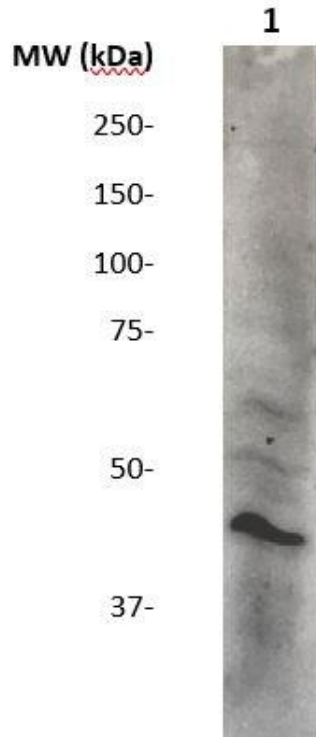
- Western Blot: 0.1-1 µg/ml
- ELISA: 0.01-0.1 µg/ml
- Immunoprecipitation: 2-5 µg/ml
- IHC: 2-10 µg/ml
- Flow cytometry: Not tested
- Molecular Weight: 45.0
- Positive Control: Kidney Tissue
- Cellular Location: Cell Membrane

*Optimal dilutions should be determined by researchers for the specific applications.

FOR RESEARCH USE ONLY.

AbboMax, Inc 2528 Qume Drive, Suite 8, San Jose, California 95131, USA
1 408-573-1898 (Tel). 1 408-573-1858 (Fax). www.abbomax.com info@abbomax.com

DATA ATTACHMENTS



Western Blot: The tissue lysate derived from ischemia rat brain was immunoprecipitated by Rabbit anti CREB (Cat#500-7354), then immuno-blotted by the Rabbit anti phospho-CREB (pS133) (Cat#600-280) antibody at 1:500 (lane 1), Lane 2: negative control. Observed a major immunoreactive band at molecular weight ~45 kDa.

REFERENCES

FOR RESEARCH USE ONLY.