



Rabbit anti AKT1/PKBa Polyclonal Antibody

Alternative Name(s): v-akt murine thymoma viral oncogene homolog 1; AKT, PKB, PKB-ALPHA, PRKBA, RAC, RAC-ALPHA

Order Information

- **Description:** AKT1/PKBa
- **Catalogue:** 600-200
- **Lot:** See label
- **Size:** 100ug/200ul
- **Host:** Rabbit
- **Clone:** nan
- **Application:** IHC(P), WB
- **Reactivity:** Hu, Ms, Rt

ANTIGEN PREPARATION

A synthetic peptide corresponding to the close to C-term of human AKT1 prote

BACKGROUND

Akt [also known as PKB (Protein kinase B) is a family of serine/threonine kinases that plays an important role in signal transduction. There are three known isoforms of Akt in mammalian cells [Akt1 (α), Akt2 (β) and Akt3 (γ)]; Akt2 and Akt3 have 81% and 83% homology in amino acid sequences with Akt1, respectively. Numerous studies have revealed that the expression pattern of Akt1 and Akt2 is ubiquitous, whereas Akt3 is expressed predominantly in brain, heart, and kidney. Akt is activated by insulin and growth and survival factors. Akt has been referred to as an oncogene because it has increased activity in a number of tumors.

PURIFICATION

The Rabbit IgG is purified by Epitope Affinity Purification

FORMULATION

This affinity purified antibody is supplied in sterile Phosphatebuffered saline (pH7.2) containing antibody stabilizer

SPECIFICITY

This antibody only recognizes ~60 kDa of human AKT1, not AKT1 or AKT2. It also reacts with mouse and rat AKT3 protein. The other species are not tested.

STORAGE

The antibodies are stable for 24 months from date of receipt when stored at -20°C to -70°C . The antibodies can be stored at 2°C - 8°C for three month without detectable loss of activity. Avoid repeated freezing-thawing cycles.

APPLICATIONS/SUGGESTED WORKING DILUTIONS*

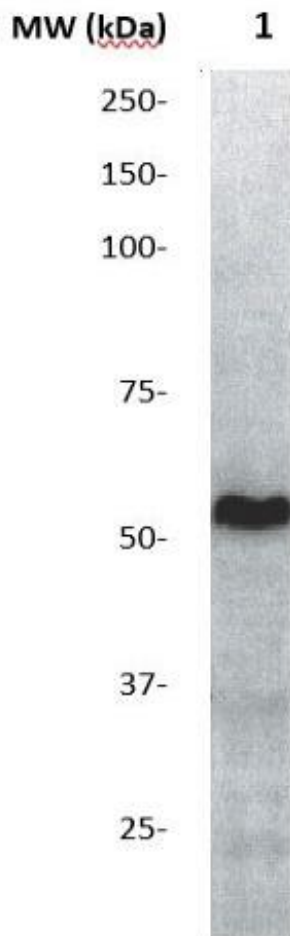
- Western Blot: 0.1-1 $\mu\text{g/ml}$
- ELISA: 0.01-0.1 $\mu\text{g/ml}$
- Immunoprecipitation: 2-5 $\mu\text{g/ml}$
- IHC: 2-10 $\mu\text{g/ml}$
- Flow cytometry: Not tested
- Molecular Weight: 62.0
- Positive Control: Kidney Tissue
- Cellular Location: Cell Membrane

*Optimal dilutions should be determined by researchers for the specific applications.

FOR RESEARCH USE ONLY.

AbboMax, Inc 2528 Qume Drive, Suite 8, San Jose, California 95131, USA
1 408-573-1898 (Tel). 1 408-573-1858 (Fax). www.abbomax.com info@abbomax.com

DATA ATTACHMENTS



Western Blot: The Cell lysate derived from HELA cell line was immuno-blotted by Rabbit anti AKT1, (Cat#600-200) at 1:500. Observed a major immunoreactive band at molecular weight ~62 kDa.

REFERENCES

FOR RESEARCH USE ONLY.