



Rabbit anti SPHK1 Polyclonal Antibody

Alternative Name(s): sphingosine kinase 1

Order Information

- **Description:** SPHK1
- **Catalogue:** 600-120
- **Lot:** See label
- **Size:** 100ug/200ul
- **Host:** Rabbit
- **Clone:** nan
- **Application:** IHC(P), WB
- **Reactivity:** Hu

ANTIGEN PREPARATION

The full-length recombinant protein of human SPHK1.

BACKGROUND

Sphingosine Kinase (SPHK) catalyzes the phosphorylation of the lipid sphingosine to form sphingosine-1 phosphate (S1P), a lipid mediator with both intra- and extracellular functions. Intracellularly, S1P regulates proliferation and survival; and extracellularly, it is a ligand for cell surface G protein-coupled receptors. SPHK protein, and its product S1P, play a key role in TNF-alpha signaling and the NF-Kappa-B activation pathway. It is important in inflammatory, antiapoptotic and immune processes. There are two SPHK isoforms, SPHK-1 and SPHK-2, have been cloned, and both isotypes are ubiquitously expressed. SPHK-1 has been shown to mediate cell growth, prevention of apoptosis, and cellular transformation, and is upregulated in a variety of human tumors. In contrast, SPHK2-2 increases apoptosis, and may be responsible for phosphorylating and activating the immunosuppressive drug.

PURIFICATION

The Rabbit IgG is purified by Epitope Affinity Purification

FORMULATION

This affinity purified antibody is supplied in sterile Phosphatebuffered saline (pH7.2) containing antibody stabilizer

SPECIFICITY

This antibody reacts with human SPHK1. The other species are not tested.

STORAGE

The antibodies are stable for 24 months from date of receipt when stored at -20oC to -70oC. The antibodies can be stored at 2oC-8oC for three month without detectable loss of activity. Avoid repeated freezing-thawing cycles.

APPLICATIONS/SUGGESTED WORKING DILUTIONS*

- Western Blot: 0.1-1 µg/ml
- ELISA: 0.01-0.1 µg/ml
- Immunoprecipitation: 2-5 µg/ml
- IHC: 2-10 µg/ml
- Flow cytometry: Not tested
- Molecular Weight: 45.0
- Positive Control: Kidney Tissue
- Cellular Location: Cell Membrane

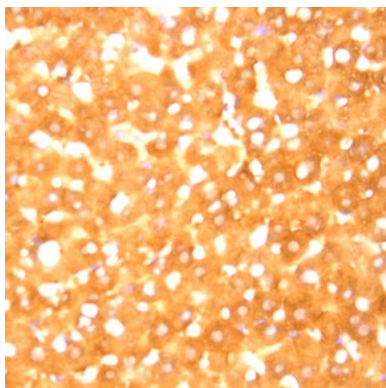
*Optimal dilutions should be determined by researchers for the specific applications.

FOR RESEARCH USE ONLY.

AbboMax, Inc 2528 Qume Drive, Suite 8, San Jose, California 95131, USA
1 408-573-1898 (Tel). 1 408-573-1858 (Fax). www.abbomax.com info@abbomax.com



DATA ATTACHMENTS



Immunohistochemistry: Human hepatocarcinoma (FFPE) stained with Rabbit anti-SPHK1 (Cat# 600-120) at 1:500 for 10 min @ RT. Staining of formalin-fixed tissue requires boiling tissue sections in 10 mM Citrate Buffer, pH 6.0 for 10 min followed by cooling at RT for 20 min.

REFERENCES

FOR RESEARCH USE ONLY.

AbboMax, Inc 2528 Qume Drive, Suite 8, San Jose, California 95131, USA
1 408-573-1898 (Tel). 1 408-573-1858 (Fax). www.abbomax.com info@abbomax.com