



Rabbit anti Midkine Polyclonal Antibody

Alternative Name(s): Neurite growth-promoting factor; NEGF2; MK; MDK

Order Information

- **Description:** Midkine
- **Catalogue:** 600-110
- **Lot:** See label
- **Size:** 100ug/200ul
- **Host:** Rabbit
- **Clone:** nan
- **Application:** IHC(P), WB, ELISA
- **Reactivity:** Hu

ANTIGEN PREPARATION

A 143 aa recombinant protein of the full length human Midkine. This sequence has 90% homologues to rat and mouse.

BACKGROUND

Midkine is a member of a family of developmentally regulated neurotrophic and heparin-binding growth factors. It has heparin binding activity and growth promoting activity. The midkine is involved in neointima formation after arterial injury, possibly by mediating leukocyte recruitment. This protein is also involved in early fetal adrenal gland development. Midkine may be an important skeletal muscle growth-promoting factor that participates in the growth process during skeletal muscle development, proliferation, and differentiation, and in the skeletal muscle regeneration in various neuromuscular disorders.

PURIFICATION

The Rabbit IgG is purified by Epitope Affinity Purification

FORMULATION

This affinity purified antibody is supplied in sterile Phosphatebuffered saline (pH7.2) containing antibody stabilizer

SPECIFICITY

This antibody reacts with human Midkine. The other species are not tested.

STORAGE

The antibodies are stable for 24 months from date of receipt when stored at -20oC to -70oC. The antibodies can be stored at 2oC-8oC for three month without detectable loss of activity. Avoid repeated freezing-thawing cycles.

APPLICATIONS/SUGGESTED WORKING DILUTIONS*

- Western Blot: 0.1-1 µg/ml
- ELISA: 0.01-0.1 µg/ml
- Immunoprecipitation: 2-5 µg/ml
- IHC: 2-10 µg/ml
- Flow cytometry: Not tested
- Molecular Weight: 15.0
- Positive Control: Kidney Tissue
- Cellular Location: Cell Membrane

*Optimal dilutions should be determined by researchers for the specific applications.

FOR RESEARCH USE ONLY.

AbboMax, Inc 2528 Qume Drive, Suite 8, San Jose, California 95131, USA
1 408-573-1898 (Tel). 1 408-573-1858 (Fax). www.abbomax.com info@abbomax.com

DATA ATTACHMENTS

MW
(kDa)

100-

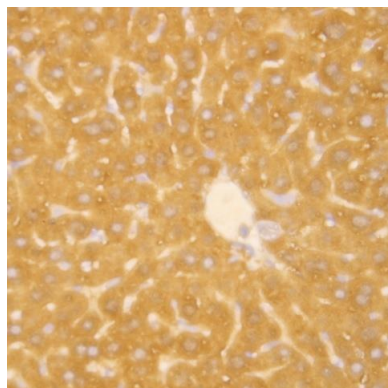
66-

37-

10-



Western Blot: The recombinant full length protein of midline was immunoblotted by the Rabbit anti Midkine (Cat#600-110) @ 1:500. An immunoreactive band was observed around 15kDa.



Immunohistochemistry: Human hepatocarcinoma (FFPE) stained with Rabbit anti-Midkine (Cat# 600-110) at 1:200 for 10 min @ RT. Staining of formalin-fixed tissue requires boiling tissue sections in 10 mM Citrate Buffer, pH 6.0 for 10 min followed by cooling at RT for 20 min.

REFERENCES

FOR RESEARCH USE ONLY.

AbboMax, Inc 2528 Qume Drive, Suite 8, San Jose, California 95131, USA
1 408-573-1898 (Tel). 1 408-573-1858 (Fax). www.abbomax.com info@abbomax.com