



## Rabbit anti SLC10a4 Polyclonal Antibody

Alternative Name(s): solute carrier family 10 (sodium/bile acid cotransporter family), member 4

### Order Information

- **Description:** SLC10a4
- **Catalogue:** 600-070
- **Lot:** See label
- **Size:** 100ug/200ul
- **Host:** Rabbit
- **Clone:** nan
- **Application:** IHC(P), WB
- **Reactivity:** Ms/Rt

### **ANTIGEN PREPARATION**

A fragment of oligo-peptide derived from extracellular domain of mouse/rat N-terminal SLC10A4 protein.

### **BACKGROUND**

The SLC10 family, or the solute carrier family, formally named the "sodium/bile salt cotransporter family", contains over 50 members in animal, plant and bacterial species. In human, two well-characterized members and three orphan transporters are known. The Na<sup>+</sup>/taurocholate cotransporting polypeptide (NTCP; SLC10A1) and the apical sodium-dependent bile salt transporter (ASBT; SLC10A2) are critical components of the enterohepatic circulation of bile salts. SLC10A4/Slc10a4 has a phylogenetic relationship to the SLC10A1 and SLC10A2. The rat SLC10A4 protein consists of 437 aa and exhibits a seven transmembrane domain topology with Nexo/Ccyt trans-orientation of the N- and C-terminal ends. The SLC10A4 protein is highly expressed in brain and placenta.

### **PURIFICATION**

The Rabbit IgG is purified by Epitope Affinity Purification

### **FORMULATION**

This affinity purified antibody is supplied in sterile Phosphatebuffered saline (pH7.2) containing antibody stabilizer

### **SPECIFICITY**

This antibody recognizes ~48 kDa of SLC10A protein. It is cross react to mouse and rat. The other species are not tested.

### **STORAGE**

The antibodies are stable for 24 months from date of receipt when stored at -20oC to -70oC. The antibodies can be stored at 2oC-8oC for three month without detectable loss of activity. Avoid repeated freezing-thawing cycles.

### **APPLICATIONS/SUGGESTED WORKING DILUTIONS\***

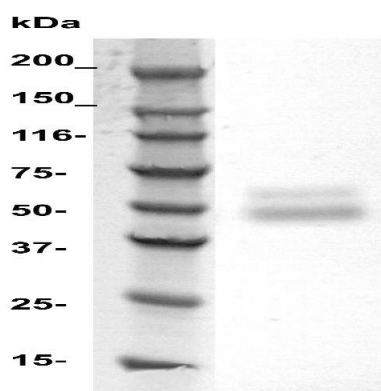
- Western Blot: 0.1-1 µg/ml
- ELISA: 0.01-0.1 µg/ml
- Immunoprecipitation: 2-5 µg/ml
- IHC: 2-10 µg/ml
- Flow cytometry: Not tested
- Molecular Weight: 48.0
- Positive Control: Kidney Tissue
- Cellular Location: Cell Membrane

\*Optimal dilutions should be determined by researchers for the specific applications.

### **FOR RESEARCH USE ONLY.**

AbboMax, Inc 2528 Qume Drive, Suite 8, San Jose, California 95131, USA  
1 408-573-1898 (Tel). 1 408-573-1858 (Fax). [www.abbomax.com](http://www.abbomax.com) [info@abbomax.com](mailto:info@abbomax.com)

## DATA ATTACHMENTS



Western Blot: Mouse brain tissue lysate was separated in 10% SDS-PAGE, transferred onto NC membrane, and followed by immune-staining with Rabbit Anti-SLC10A4 antibody, (Cat# 600-070 ) at 1:500. A dominant immunoreactive protein band at ~48 kDa was observed.

## REFERENCES

### FOR RESEARCH USE ONLY.

AbboMax, Inc 2528 Qume Drive, Suite 8, San Jose, California 95131, USA  
1 408-573-1898 (Tel). 1 408-573-1858 (Fax). [www.abbomax.com](http://www.abbomax.com) [info@abbomax.com](mailto:info@abbomax.com)