



Rabbit anti MMP-8 Polyclonal Antibody

Alternative Name(s): Matrix metalloproteinase 8

Order Information

- **Description:** MMP-8
- **Catalogue:** 500-9884
- **Lot:** See label
- **Size:** 100ug/200ul
- **Host:** Rabbit
- **Clone:** nan
- **Application:** IHC(P), WB
- **Reactivity:** Hu

ANTIGEN PREPARATION

A synthetic peptide corresponding to the hinge region of human MMP-8.

BACKGROUND

The matrix metalloproteinase (MMP) are proteolytic enzymes involved in the breakdown of extracellular matrix in normal physiological processes, such as embryonic development, reproduction, and tissue remodeling, as well as in disease processes, such as arthritis and metastasis. Most MMP's are secreted as inactive proproteins which are activated when cleaved by extracellular proteinases. Imbalanced secretion of certain MMP or disturbances in the differential control of MMP by tissue inhibitor of MMPs (TIMPs) are implicated in the invasive potential of malignant tumors. MMP-8 is expressed exclusively in inflammatory conditions. MMP-8 is highly expressed in the postpartum uterus, and it is thought to be involved in the postpartum involution of the uterus. MMP-8 is also the predominant collagenase expressed in ulcers and healing wounds.

PURIFICATION

The Rabbit IgG is purified by Epitope Affinity Purification

FORMULATION

This affinity purified antibody is supplied in sterile Phosphatebuffered saline (pH7.2) containing antibody stabilizer

SPECIFICITY

This antibody recognizes ~65 kDa of MMP-8. This antibody reacts with human, not rat and mouse. The other species are not tested.

STORAGE

The antibodies are stable for 24 months from date of receipt when stored at -20oC to -70oC. The antibodies can be stored at 2oC-8oC for three month without detectable loss of activity. Avoid repeated freezing-thawing cycles.

APPLICATIONS/SUGGESTED WORKING DILUTIONS*

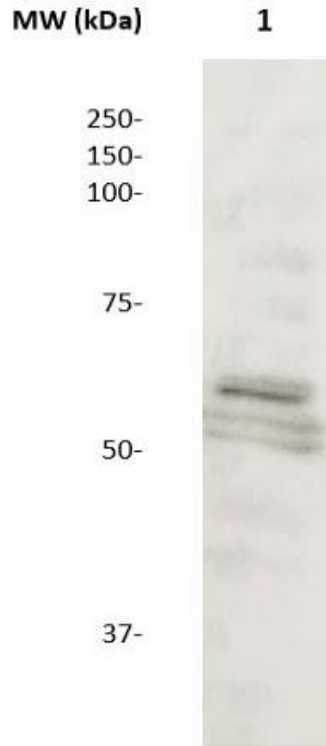
- Western Blot: 0.1-1 µg/ml
- ELISA: 0.01-0.1 µg/ml
- Immunoprecipitation: 2-5 µg/ml
- IHC: 2-10 µg/ml
- Flow cytometry: Not tested
- Molecular Weight: 65.0
- Positive Control: Kidney Tissue
- Cellular Location: Cell Membrane

*Optimal dilutions should be determined by researchers for the specific applications.

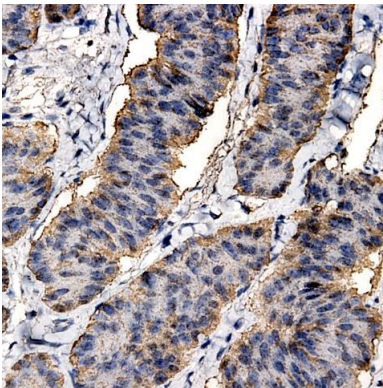
FOR RESEARCH USE ONLY.

AbboMax, Inc 2528 Qume Drive, Suite 8, San Jose, California 95131, USA
1 408-573-1898 (Tel). 1 408-573-1858 (Fax). www.abbomax.com info@abbomax.com

DATA ATTACHMENTS



Western Blot: The whole cell lysate derived from CRL-2061 (human myosarcoma) was resolved on 10% SDS-PAGE, and transferred onto NC membrane, and probed by anti-MMP-8 (Cat#500-9884) at 1:100. An immunoreactive band at ~65 kDa was observed.



Immunohistochemistry: Human Colon carcinoma (FFPE) stained with Rabbit anti-MMP-8 (Cat# 500-9884) at 1:200 for 10 min @ RT. Staining of formalin-fixed tissue requires boiling tissue sections in 10 mM Citrate Buffer, pH 6.0 for 10 min followed by cooling at RT for 20 min.

REFERENCES

FOR RESEARCH USE ONLY.