



Rabbit anti Eotaxin Polyclonal Antibody

Alternative Name(s): C-C motif chemokine 11; CCL11;

Order Information

- **Description:** Eotaxin
- **Catalogue:** 500-9714
- **Lot:** See label
- **Size:** 100ug/200ul
- **Host:** Rabbit
- **Clone:** nan
- **Application:** IHC(P), WB
- **Reactivity:** Hu

ANTIGEN PREPARATION

A synthetic peptide derived from internal segment of human Eotaxin

BACKGROUND

Eotaxin (also designated eotaxin-1) is a member of the C-C or β family of chemokines which is characterized by a pair of adjacent cysteine residues. Eotaxin was first purified from the bronchoalveolar lavage fluid of guinea pigs challenged with an aerosol allergen, and serves as a potent chemoattractant for eosinophils. Eosinophilia is a prominent feature of several allergic conditions and is thought to be a central event in maladies such as bronchial asthma, dermatitis, conjunctivitis and possibly inflammatory bowel disease. The cognate eotaxin receptor has been identified. Originally described as mouse orphan receptor (MIP-1a receptor-like 2), CKR-3 has been shown to not only serve as the high affinity receptor for eotaxin, but also for RANTES and MCP-3. CKR-3 is expressed on the cell surface of primary eosinophils and does not bind to other members of the C-C or C-X-C family of chemokines. CKR-3 also serves as a co-receptor for a restricted subset of viruses.

PURIFICATION

The Rabbit IgG is purified by Epitope Affinity Purification

FORMULATION

This affinity purified antibody is supplied in sterile Phosphatebuffered saline (pH7.2) containing antibody stabilizer

SPECIFICITY

This antibody reacts with human Eotaxin. The other species are not tested.

STORAGE

The antibodies are stable for 24 months from date of receipt when stored at -20°C to -70°C . The antibodies can be stored at 2°C - 8°C for three month without detectable loss of activity. Avoid repeated freezing-thawing cycles.

APPLICATIONS/SUGGESTED WORKING DILUTIONS*

- Western Blot: 0.1-1 $\mu\text{g/ml}$
- ELISA: 0.01-0.1 $\mu\text{g/ml}$
- Immunoprecipitation: 2-5 $\mu\text{g/ml}$
- IHC: 2-10 $\mu\text{g/ml}$
- Flow cytometry: Not tested
- Molecular Weight: 84.0
- Positive Control: Kidney Tissue
- Cellular Location: Cell Membrane

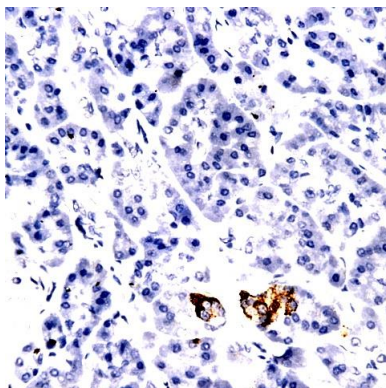
*Optimal dilutions should be determined by researchers for the specific applications.

FOR RESEARCH USE ONLY.

AbboMax, Inc 2528 Qume Drive, Suite 8, San Jose, California 95131, USA
1 408-573-1898 (Tel). 1 408-573-1858 (Fax). www.abbomax.com info@abbomax.com



DATA ATTACHMENTS



Immunohistochemistry: Lung tissue (FFPE) stained with Rabbit anti-Eotaxin (Cat# 500-9714) at 1:200 for 10 min @ RT. Staining of formalin-fixed tissue requires boiling tissue sections in 10 mM Citrate Buffer, pH 6.0 for 10 min followed by cooling at RT for 20 min.

REFERENCES

FOR RESEARCH USE ONLY.

AbboMax, Inc 2528 Qume Drive, Suite 8, San Jose, California 95131, USA
1 408-573-1898 (Tel). 1 408-573-1858 (Fax). www.abbomax.com info@abbomax.com