



Rabbit anti CIS-1 Polyclonal Antibody

Alternative Name(s): Cytokine inducible SH2-containing protein; CIS-1;

Order Information

- **Description:** CIS-1
- **Catalogue:** 500-9594
- **Lot:** See label
- **Size:** 100ug/200ul
- **Host:** Rabbit
- **Clone:** nan
- **Application:** IHC(P), WB
- **Reactivity:** Hu

ANTIGEN PREPARATION

A synthetic peptide corresponding to internal sequence of CIS-1 protein from human, rat and mouse origins

BACKGROUND

Cytokines induce a variety of biological responses by binding to specific cell surface receptors and activating cytoplasmic signal transduction pathways which are suppressed by other transcriptional factors. Proteins that mediate these signals from the cell surface to the nucleus include JAKs and STATs, while SOCS (Suppressor of cytokine signaling) proteins inhibit those signaling. The SOCS family comprises at least 8 members, SOCS1 to SOCS7 and CIS (cytokine inducible SH2 containing protein). Structurally, the SOCS proteins are composed of an N terminal region of variable length and amino acid composition, a central SH2 domain, and a previously unrecognized C terminal motif named the SOCS box. SOCS 1 inhibition of signal transduction appears to occur by binding to and inhibiting the catalytic activity of members of JAK family of cytoplasmic kinases (direct JAK2 kinase inhibition). CIS1 is involved in EPO signaling.

PURIFICATION

The Rabbit IgG is purified by Epitope Affinity Purification

FORMULATION

This affinity purified antibody is supplied in sterile Phosphatebuffered saline (pH7.2) containing antibody stabilizer

SPECIFICITY

This antibody recognizes ~29 kDa of CIS-1 protein from human, rat and mouse origins. The other species are not tested.

STORAGE

The antibodies are stable for 24 months from date of receipt when stored at -20oC to -70oC. The antibodies can be stored at 2oC-8oC for three month without detectable loss of activity. Avoid repeated freezing-thawing cycles.

APPLICATIONS/SUGGESTED WORKING DILUTIONS*

- Western Blot: 0.1-1 µg/ml
- ELISA: 0.01-0.1 µg/ml
- Immunoprecipitation: 2-5 µg/ml
- IHC: 2-10 µg/ml
- Flow cytometry: Not tested
- Molecular Weight: 29.0
- Positive Control: Kidney Tissue
- Cellular Location: Cell Membrane

*Optimal dilutions should be determined by researchers for the specific applications.

FOR RESEARCH USE ONLY.

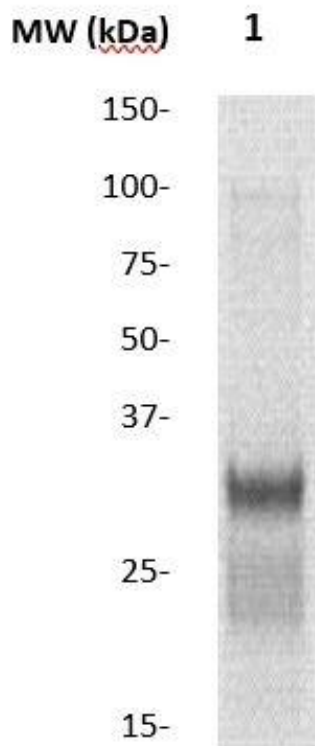
AbboMax, Inc 2528 Qume Drive, Suite 8, San Jose, California 95131, USA
1 408-573-1898 (Tel). 1 408-573-1858 (Fax). www.abbomax.com info@abbomax.com



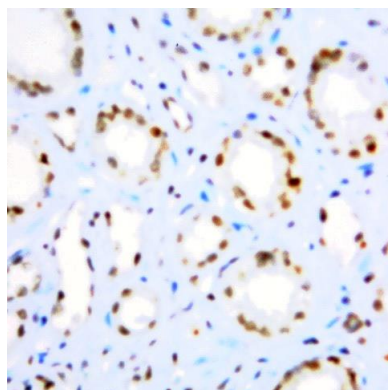
FOR RESEARCH USE ONLY.

AbboMax, Inc 2528 Qume Drive, Suite 8, San Jose, California 95131, USA
1 408-573-1898 (Tel). 1 408-573-1858 (Fax). www.abbomax.com info@abbomax.com

DATA ATTACHMENTS



Western Blot: The tissue lysate derived from mouse kidney was immunoprobed by Rabbit anti-CIS-1 (Cat#500-9594) at 1:500. An immunoreactive band is observed around ~28kDa.



Immunohistochemistry: Human Prostate carcinoma (FFPE) stained with Rabbit anti-CIS (Cat# 500-9594) at 1:200 for 10 min @ RT. Staining of formalin-fixed tissue requires boiling tissue sections in 10 mM Citrate Buffer, pH 6.0 for 10 min followed by cooling at RT for 20 min.

REFERENCES

FOR RESEARCH USE ONLY.

AbboMax, Inc 2528 Qume Drive, Suite 8, San Jose, California 95131, USA
1 408-573-1898 (Tel). 1 408-573-1858 (Fax). www.abbomax.com info@abbomax.com