



Rabbit anti STAT5b Polyclonal Antibody

Alternative Name(s): Signal transducer and activator of transcription 5b

Order Information

- **Description:** STAT5b
- **Catalogue:** 500-8374
- **Lot:** See label
- **Size:** 100ug/200ul
- **Host:** Rabbit
- **Clone:** nan
- **Application:** IHC(P), WB
- **Reactivity:** Hu, Ms, Rt

ANTIGEN PREPARATION

A synthetic peptide derived from internal segment of human STAT5b

BACKGROUND

STAT proteins (Signal transducer and activator of transcription) belong to a family of cytoplasmic transcription factors that can be phosphorylated by a ligand binding to its cell surface receptor. Activation of STAT5a induces dimerization, nuclear translocation and DNA binding. Stat5b is activated by IL-2, IL-7, IL-15, IL-3, GM-CSF, growth hormone, prolactin, erythropoietin and thrombopoietin; activation and dimerization of Stat5b requires phosphorylation of STATs.

PURIFICATION

The Rabbit IgG is purified by Epitope Affinity Purification

FORMULATION

This affinity purified antibody is supplied in sterile Phosphatebuffered saline (pH7.2) containing antibody stabilizer

SPECIFICITY

This antibody recognizes STAT5b protein. It reacts to human, mice and rat. The other species not tested.

STORAGE

The antibodies are stable for 24 months from date of receipt when stored at -20°C to -70°C. The antibodies can be stored at 2°C-8°C for three months without detectable loss of activity. Avoid repeated freezing-thawing cycles.

APPLICATIONS/SUGGESTED WORKING DILUTIONS*

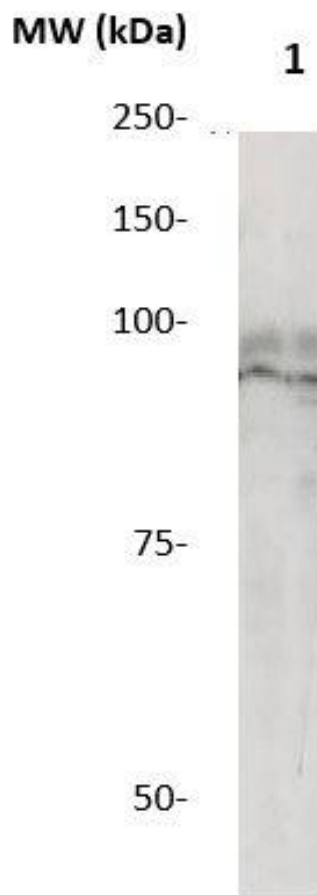
- Western Blot: 0.1-1 µg/ml
- ELISA: 0.01-0.1 µg/ml
- Immunoprecipitation: 2-5 µg/ml
- IHC: 2-10 µg/ml
- Flow cytometry: Not tested
- Molecular Weight: 90.0
- Positive Control: Kidney Tissue
- Cellular Location: Cell Membrane

*Optimal dilutions should be determined by researchers for the specific applications.

FOR RESEARCH USE ONLY.

AbboMax, Inc 2528 Qume Drive, Suite 8, San Jose, California 95131, USA
1 408-573-1898 (Tel). 1 408-573-1858 (Fax). www.abbomax.com info@abbomax.com

DATA ATTACHMENTS



Western Blot: The whole lysate derived from Hela (20 ug/lane) immunoblotted by Rabbit anti – STAT5b (Cat# 500-8374) at 1:500. Observed a major immunoreactive band at molecular weight ~90kDa.

REFERENCES

FOR RESEARCH USE ONLY.

AbboMax, Inc 2528 Qume Drive, Suite 8, San Jose, California 95131, USA
1 408-573-1898 (Tel). 1 408-573-1858 (Fax). www.abbomax.com info@abbomax.com