



## Rabbit anti p73 Polyclonal Antibody

Alternative Name(s): Tumor protein p73; TP73; CILD47

### Order Information

- **Description:** p73
- **Catalogue:** 500-8074
- **Lot:** See label
- **Size:** 100ug/200ul
- **Host:** Rabbit
- **Clone:** nan
- **Application:** IHC(P), WB
- **Reactivity:** Hu

### **ANTIGEN PREPARATION**

A synthetic peptide derived from internal segment of human p73

### **BACKGROUND**

P73 is a member of the p53 family of transcription factors involved in cellular responses to stress and development. The p53 gene product can act as a negative regulator of cell growth in response to DNA damage. Mutations and allelic loss of the p53 gene have been associated with malignant transformation in a wide variety of human tumors. p53 shares considerable sequence similarity with p73, a gene that maps to a region in chromosome 1 that is frequently deleted in neuroblastomas. However, p73 does not appear to be activated by DNA damaging agents. The p73 isoform p73 $\alpha$  inhibits drug-induced apoptosis in small cell lung carcinoma cells, while the p73 isoform p73 $\beta$  promotes it. p73 $\alpha$  also prevents Bax activation, mitochondrial dysfunction, caspase activation and is able to reduce apoptosis induced by the BH3-only protein PUMA (p53 upregulated modulator of apoptosis). There is an equilibrium between p73 $\alpha$  and p73 $\beta$ , demonstrated by the fact that p73 $\alpha$  inhibits the pro-apoptotic effect of p73 $\beta$ .

### **PURIFICATION**

The Rabbit IgG is purified by Epitope Affinity Purification

### **FORMULATION**

This affinity purified antibody is supplied in sterile Phosphatebuffered saline (pH7.2) containing antibody stabilizer

### **SPECIFICITY**

This antibody recognizes human p73 protein. The other species not tested.

### **STORAGE**

The antibodies are stable for 24 months from date of receipt when stored at -20oC to -70oC. The antibodies can be stored at 2oC-8oC for three month without detectable loss of activity. Avoid repeated freezing-thawing cycles.

### **APPLICATIONS/SUGGESTED WORKING DILUTIONS\***

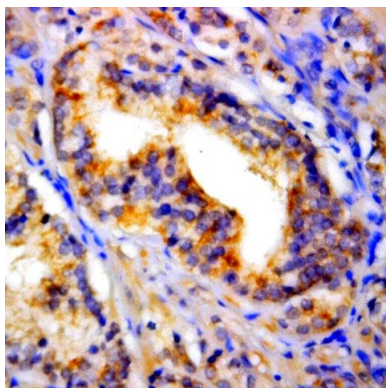
- Western Blot: 0.1-1  $\mu$ g/ml
- ELISA: 0.01-0.1  $\mu$ g/ml
- Immunoprecipitation: 2-5  $\mu$ g/ml
- IHC: 2-10  $\mu$ g/ml
- Flow cytometry: Not tested
- Molecular Weight: 70.0
- Positive Control: Kidney Tissue
- Cellular Location: Cell Membrane

\*Optimal dilutions should be determined by researchers for the specific applications.

### **FOR RESEARCH USE ONLY.**

AbboMax, Inc 2528 Qume Drive, Suite 8, San Jose, California 95131, USA  
1 408-573-1898 (Tel). 1 408-573-1858 (Fax). [www.abbomax.com](http://www.abbomax.com) [info@abbomax.com](mailto:info@abbomax.com)

#### DATA ATTACHMENTS



Immunohistochemistry: Human Prostate carcinoma (FFPE) stained with Rabbit anti-P73 (Cat# 500-8074) at 1:200 for 10 min @ RT. Staining of formalin-fixed tissue requires boiling tissue sections in 10 mM Citrate Buffer, pH 6.0 for 10 min followed by cooling at RT for 20 min.

#### REFERENCES

#### FOR RESEARCH USE ONLY.

AbboMax, Inc 2528 Qume Drive, Suite 8, San Jose, California 95131, USA  
1 408-573-1898 (Tel). 1 408-573-1858 (Fax). [www.abbomax.com](http://www.abbomax.com) [info@abbomax.com](mailto:info@abbomax.com)