



Rabbit anti MyD88 Polyclonal Antibody

Alternative Name(s): myeloid differentiation factor 88 (MyD88)

Order Information

- **Description:** MyD88
- **Catalogue:** 500-7984
- **Lot:** See label
- **Size:** 100ug/200ul
- **Host:** Rabbit
- **Clone:** nan
- **Application:** WB
- **Reactivity:** Hu, Ms, Rt

ANTIGEN PREPARATION

A synthetic peptide corresponding to the C-terminus of human MyD88. This sequence is identical among human, rat, mouse.

BACKGROUND

The Toll-like receptor adaptor protein Myeloid differentiation factor 88 (MyD88) is a 296 amino acid protein. Signaling through MyD88 promotes carcinogenesis. It is rapidly upregulated during differentiation of the myeloleukemic cells. MyD88 is essential for the regulation of intestinal homeostasis in mammals. Overexpression of the death domain region leads to transcriptional activation of the IL-8 promoter. Lack of intact MyD88 signaling in B cells, coupled with impaired epithelial integrity, enables commensal bacteria to function as highly pathogenic organisms, causing rapid host death. MyD88 activities with downstream of different receptors impact tissue homeostasis and carcinogenesis.

PURIFICATION

The Rabbit IgG is purified by Epitope Affinity Purification

FORMULATION

This affinity purified antibody is supplied in sterile Phosphatebuffered saline (pH7.2) containing antibody stabilizer

SPECIFICITY

This antibody recognizes ~34 kDa of human MyD 88 protein. This antibody also reacts with mouse and rat, chicken. The other species are not tested.

STORAGE

The antibodies are stable for 24 months from date of receipt when stored at -20oC to -70oC. The antibodies can be stored at 2oC-8oC for three month without detectable loss of activity. Avoid repeated freezing-thawing cycles.

APPLICATIONS/SUGGESTED WORKING DILUTIONS*

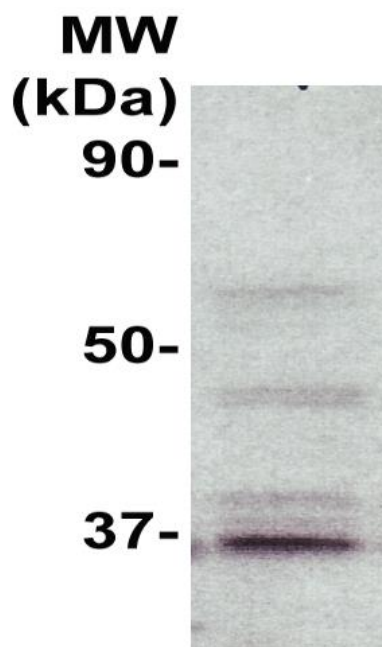
- Western Blot: 0.1-1 µg/ml
- ELISA: 0.01-0.1 µg/ml
- Immunoprecipitation: 2-5 µg/ml
- IHC: 2-10 µg/ml
- Flow cytometry: Not tested
- Molecular Weight: 34.0
- Positive Control: Kidney Tissue
- Cellular Location: Cell Membrane

*Optimal dilutions should be determined by researchers for the specific applications.

FOR RESEARCH USE ONLY.

AbboMax, Inc 2528 Qume Drive, Suite 8, San Jose, California 95131, USA
1 408-573-1898 (Tel). 1 408-573-1858 (Fax). www.abbomax.com info@abbomax.com

DATA ATTACHMENTS



Western Blot: The whole cell lysates derived from K562 were immunoblotted by Rabbit anti-MyD88 (Cat#500-7984) at 1:500 . An immunoreactive band around 34 kDa was observed

REFERENCES

FOR RESEARCH USE ONLY.

AbboMax, Inc 2528 Qume Drive, Suite 8, San Jose, California 95131, USA
1 408-573-1898 (Tel). 1 408-573-1858 (Fax). www.abbomax.com info@abbomax.com