



Mouse anti Laminin Monoclonal Antibody

Alternative Name(s): Laminin, beta; LAMB1

Order Information

- **Description:** Laminin
- **Catalogue:** 500-7794
- **Lot:** See label
- **Size:** 100ug/200ul
- **Host:** Mouse
- **Clone:** ABM412
- **Application:** IHC(P), WB
- **Reactivity:** Hu, Rt, Bv, Ck

ANTIGEN PREPARATION

Purified recombinant partial length of human Laminin protein.

BACKGROUND

Laminin family consists of 5 subunits, A, B1, B2, M and S. Laminin is a ubiquitous non-collagenous connective tissue glycoprotein that is a major constituent of basement membranes. It is broadly expressed in: skin, heart, lung, and the reproductive tracts. The expression of laminin (Ln) alpha1-chain in developing and adult human tissues. In both fetal and adult kidney, a distinct immunoreactivity was seen in basement membranes (BM). The laminin A chain is present in epithelial, endothelial, and smooth muscle basement membranes. The laminin protein can be phosphorylated in HeLa cells by EGF stimulation in vitro.

PURIFICATION

The mouse IgG is purified by Protein A-Affinity Chromatography according to Isotyping

FORMULATION

This affinity purified antibody is supplied in sterile Phosphatebuffered saline (pH7.2) containing antibody stabilizer

SPECIFICITY

This antibody recognizes Laminin protein. It reacts to human, mice and rat. The other species not tested.

STORAGE

The antibodies are stable for 24 months from date of receipt when stored at -20oC to -70oC. The antibodies can be stored at 2oC-8oC for three month without detectable loss of activity. Avoid repeated freezing-thawing cycles.

APPLICATIONS/SUGGESTED WORKING DILUTIONS*

- Western Blot: 0.1-1 µg/ml
- ELISA: 0.01-0.1 µg/ml
- Immunoprecipitation: 2-5 µg/ml
- IHC: 2-10 µg/ml
- Flow cytometry: Not tested
- Molecular Weight: >200
- Positive Control: Kidney Tissue
- Cellular Location: Cell Membrane

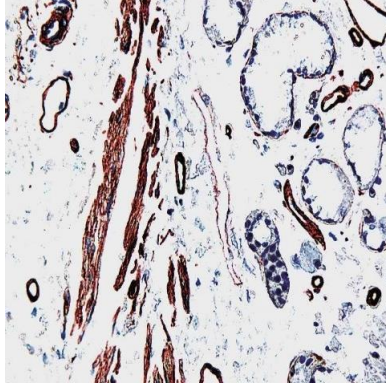
*Optimal dilutions should be determined by researchers for the specific applications.

FOR RESEARCH USE ONLY.

AbboMax, Inc 2528 Qume Drive, Suite 8, San Jose, California 95131, USA
1 408-573-1898 (Tel). 1 408-573-1858 (Fax). www.abbomax.com info@abbomax.com



DATA ATTACHMENTS



Immunohistochemistry: Human lung tissue FFPE slides stained with mouse anti-Laminin monoclonal antibody (Cat#500-7794) at 1:200 for 10 min @ RT, Visualized by using DAB chromogen color system. Note: Staining of formalin-fixed tissue requires boiling tissue sections in 10 mM Citrate Buffer, pH 6.0 for 10 min followed by cooling at RT for 20 min. H

REFERENCES

FOR RESEARCH USE ONLY.

AbboMax, Inc 2528 Qume Drive, Suite 8, San Jose, California 95131, USA
1 408-573-1898 (Tel). 1 408-573-1858 (Fax). www.abbomax.com info@abbomax.com