



Rabbit anti Glucagon Polyclonal Antibody

Alternative Name(s): GLP1, GLP2

Order Information

- **Description:** Glucagon
- **Catalogue:** 500-6944
- **Lot:** See label
- **Size:** 100ug/200ul
- **Host:** Rabbit
- **Clone:** nan
- **Application:** IHC(P), ELISA
- **Reactivity:** Hu, Ms, Rt

ANTIGEN PREPARATION

A synthetic peptide corresponding to the human Glucagon conjugated to carrier protein.

BACKGROUND

Glucagon is a 29 amino acids polypeptide hormone that is secreted by alpha cells in the islets of Langerhans of endocrine portion of the pancreas. Glucagon antagonizes insulin by converting glycogen to glucose in the liver and increasing blood sugar levels. Glucagon-like peptide 1 (GLP1), glucagon-like peptide 2 (GLP2), VIP (Vaso-active intestinal peptide) and PACAP (pituitary adenylate cyclase activating polypeptide) are in the glucagons hormone family. GLP1 is a transmitter in the central nervous system that regulates feeding and drinking behavior. GLP2 stimulates intestinal epithelial growth.

PURIFICATION

The Rabbit IgG is purified by Epitope Affinity Purification

FORMULATION

This affinity purified antibody is supplied in sterile Phosphatebuffered saline (pH7.2) containing antibody stabilizer

SPECIFICITY

This antibody recognizes human Glucagon protein. It also reacts with mouse and rat origins. The other species are not tested.

STORAGE

The antibodies are stable for 24 months from date of receipt when stored at -20°C to -70°C . The antibodies can be stored at 2°C - 8°C for three month without detectable loss of activity. Avoid repeated freezing-thawing cycles.

APPLICATIONS/SUGGESTED WORKING DILUTIONS*

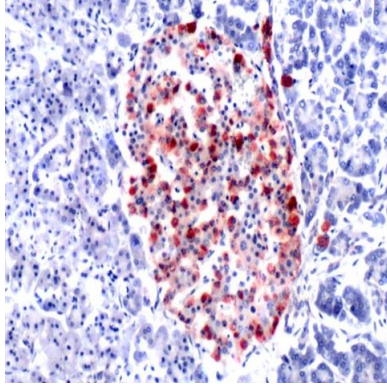
- Western Blot: 0.1-1 $\mu\text{g}/\text{ml}$
- ELISA: 0.01-0.1 $\mu\text{g}/\text{ml}$
- Immunoprecipitation: 2-5 $\mu\text{g}/\text{ml}$
- IHC: 2-10 $\mu\text{g}/\text{ml}$
- Flow cytometry: Not tested
- Molecular Weight: 25.0
- Positive Control: Kidney Tissue
- Cellular Location: Cell Membrane

*Optimal dilutions should be determined by researchers for the specific applications.

FOR RESEARCH USE ONLY.

AbboMax, Inc 2528 Qume Drive, Suite 8, San Jose, California 95131, USA
1 408-573-1898 (Tel). 1 408-573-1858 (Fax). www.abbomax.com info@abbomax.com

DATA ATTACHMENTS



Immunohistochemistry: Human pancreatic tissue (FFPE) was stained with Anti-Glucagon antibody, (Cat# 500-6944) at 1:100 for 30 min @ RT. Staining of formalin-fixed tissue requires boiling tissue sections in 10 mM Citrate Buffer, pH 6.0 for 10 min followed by cooling at RT for 20 min.

REFERENCES

FOR RESEARCH USE ONLY.